

# Phillip P. Sharp

**Master tailor, WWII Medic and amateur war-time photographer, caretaker and lessee of Whatipu Lodge, long-time member of Titirangi RSA.**

Presentation by  
Raewynn Robertson  
Local History Librarian, Research West



**Phillip Francis Percival Sharp, Service No.13793, Rank Medical Corp, c1942.**

Photographer unknown. Phillip P. Sharp Photo Album, TRS-A03-02-02

Auckland Libraries Heritage Collections



**Street sweepers asleep on the road, Cairo, Egypt, 1942.**

Photographer Phillip Sharp. Phillip P. Sharp Photo Album, TRS-A02-05-01  
Auckland Libraries Heritage Collections



**Running races at the 2<sup>nd</sup> New Zealand Expeditionary Forces  
sportsground, Gizera, Egypt, 1942.**

Photographer Phillip Sharp. Phillip P. Sharp Photo Album, TRS-A02-11-02  
Auckland Libraries Heritage Collections



**Soldiers walking down a street where a donkey is pulling a laden cart, Halwan, Egypt, c1941.**

Photographer Phillip Sharp. Phillip P. Sharp Photo Album, TRS-A02-15-01  
Auckland Libraries Heritage Collections



**Medical evacuation tent, El Alamein, Egypt, 1942.**

Photographer Phillip Sharp. Phillip P. Sharp Photo Album, TRS-A02-16-01  
Auckland Libraries Heritage Collections



**Crossing the Egyptian / Libyan border, 1942.**

Photographer Phillip Sharp. Phillip P. Sharp Photo Album, TRS-A02-16-02  
Auckland Libraries Heritage Collections



**Military camp, El Alamein, Egypt, 1942.**

Photographer Phillip Sharp. Phillip P. Sharp Photo Album, TRS-A02-17-04  
Auckland Libraries Heritage Collections





**The Last Post, El Alamein, Egypt, 1942.**

Photographer Phillip Sharp. Phillip P. Sharp Photo Album, TRS-A02-17-04  
Auckland Libraries Heritage Collections



**A shot-down Italian plane, El Alamein, Egypt, 1942.**

Photographer Phillip Sharp. Phillip P. Sharp Photo Album, TRS-A02-20-02  
Auckland Libraries Heritage Collections



**Plane spotting, El Alamein, Egypt, 1942.**

Photographer Phillip Sharp. Phillip P. Sharp Photo Album, TRS-A02-20-04  
Auckland Libraries Heritage Collections



**Stuck in the mud, El Alamein, Egypt, 1942.**

Photographer Phillip Sharp. Phillip P. Sharp Photo Album, TRS-A02-24-02  
Auckland Libraries Heritage Collections



**Loading wounded soldiers into an evacuation aircraft, El Alamein, Egypt, 1942.**

Photographer Phillip Sharp. Phillip P. Sharp Photo Album, TRS-A02-27-01

Auckland Libraries Heritage Collections



**Phillip Sharp (left) with an unidentified soldier. El Alamein, Egypt, 1942.**

Photographer: unknown. Phillip P. Sharp Photo Album, TRS-A02-40-01

Auckland Libraries Heritage Collections



**Donkey Races, Tunisia, 1942.**

Photographer: Phillip Sharp. Phillip P. Sharp Photo Album, TRS-A02-37-01  
Auckland Libraries Heritage Collections



**Catholic Cathedral, Tripoli, Libya, 1942.**

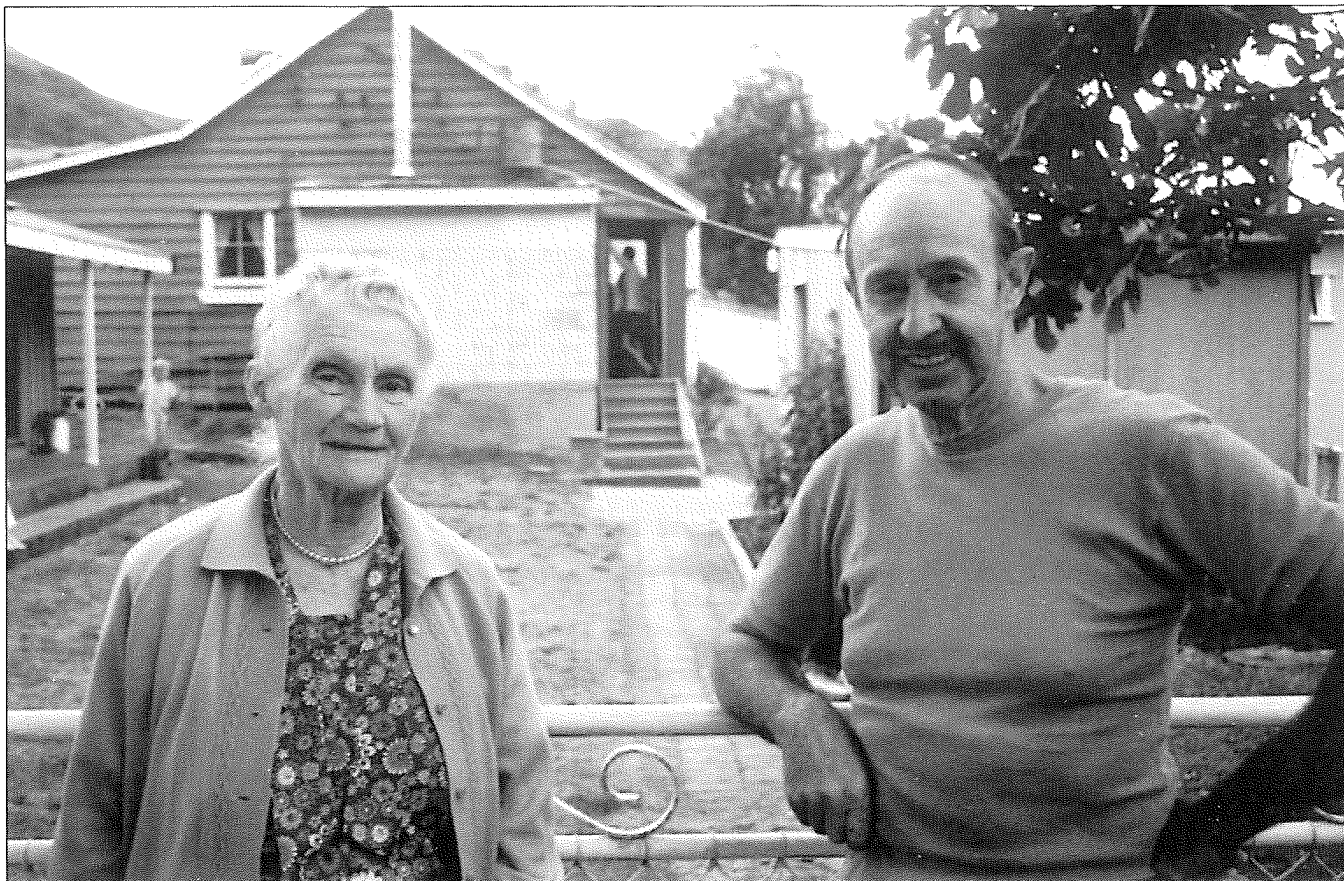
Photographer Phillip Sharp. Phillip P. Sharp Photo Album, TRS-A02-35-05  
Auckland Libraries Heritage Collections





**Gibbons Homestead, Whatipu Lodge, 1954.**

Photographer: John Thomas Diamond. J.T. Diamond Collection, JTD-06A-00180  
Auckland Libraries Heritage Collections.



*Mrs. F. Farley and Mr. Phil Sharp. Christmas 1972 at Whatipu.*

Courtesy of John and Kathleen Wentworth Collection

**Mrs F. Farley and Mr Phil Sharp at Whatipu, December 1972.**

Photographer unknown. John and Kathleen Wentworth Collection [Private Collection]

Page 152, *Whatipu: The story of Whatipu and early Huia* – Bruce Harvey, 2001



**Plaque for Phil Sharp, Whatipu Lodge..**

Photographer: Ursel Koppelman, 2021, Whatipu Lodge.

# Research West

Level 2, Waitakere Central Library  
3 Ratanui Street, Henderson