



WILLIAM BLOOMFIELD

Architect - Hotel
Titirangi



Connecting the old and the new. Photo: Simon Devitt



Te Uru Waitākere Contemporary Gallery. Photo: Patrick Reynolds. Courtesy of Te Uru



Te Uru Waitākere Contemporary Gallery. Photo: Sam Hartnett. Courtesy of Te Uru



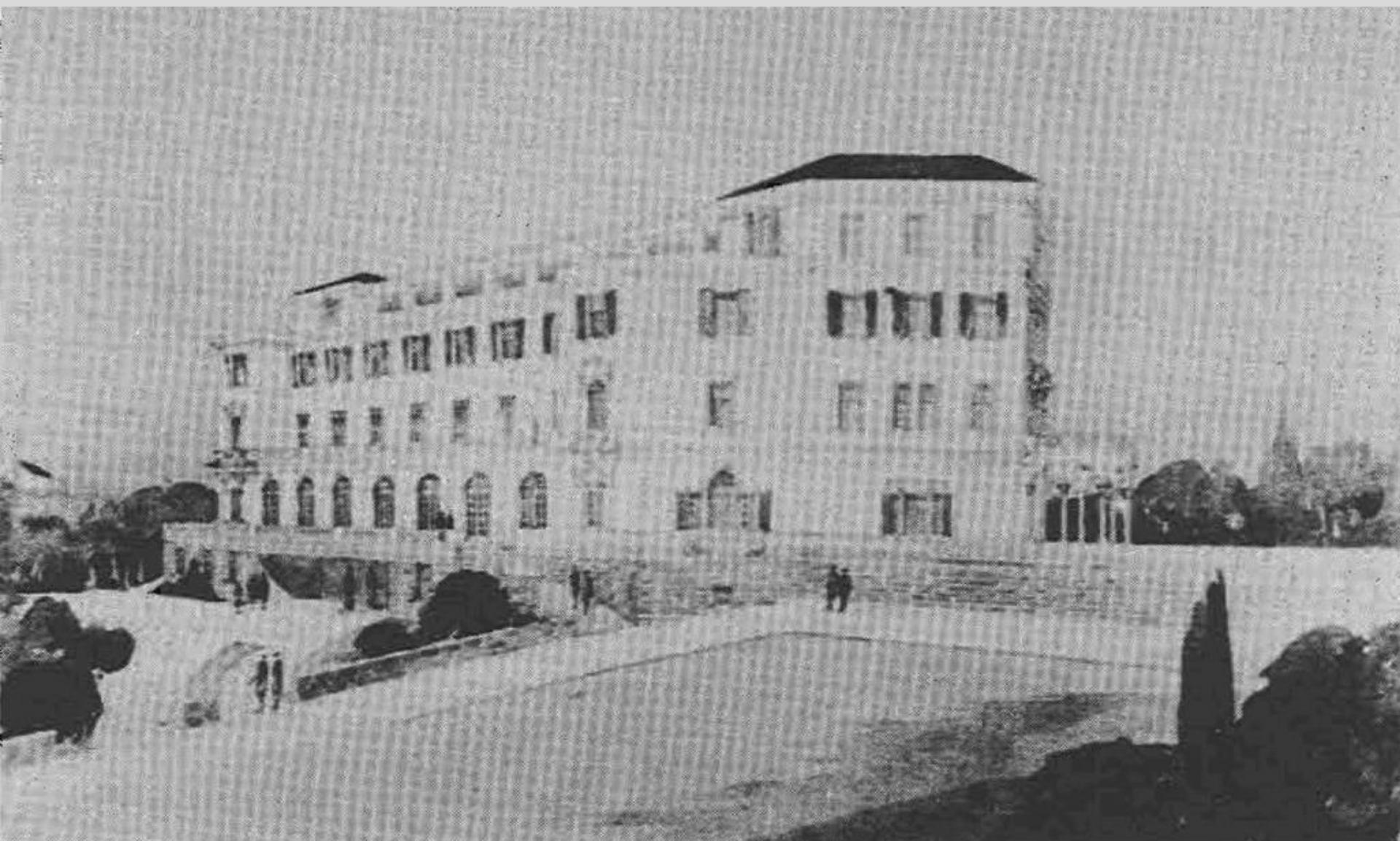
Te Uru Waitākere Contemporary Gallery. Photo: Sam Hartnett. Courtesy of Te Uru



Hotel Titirangi, 1942. Photograph courtesy of New Zealand Herald Archives



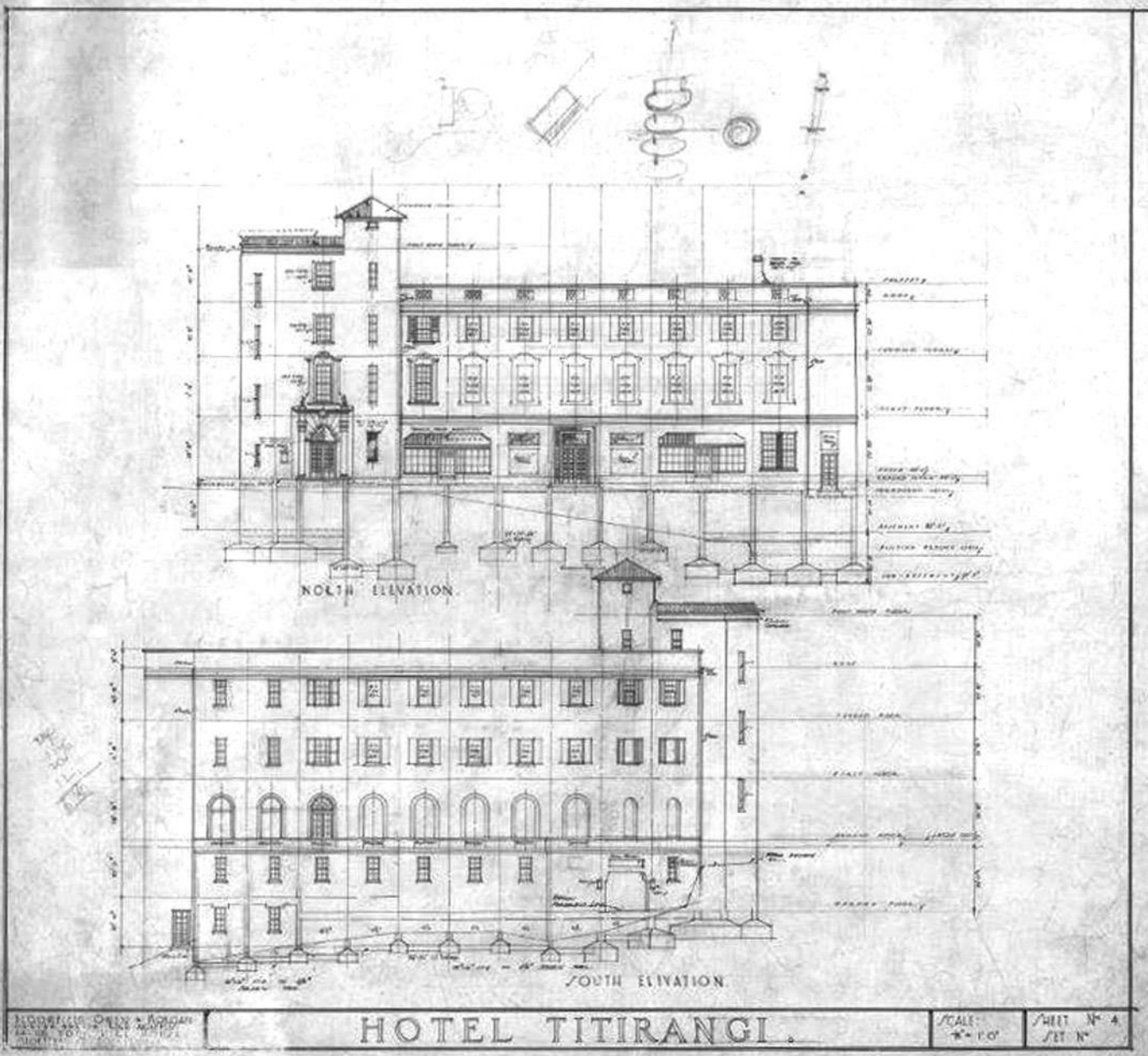
Postcard purchased June 2013. At front, left, Peat's gift shop, and his Treasure House. Rear, left, Alec Bishop's house; at right "Quambi/Quamby", F O Peat's house. Information from Titirangi Fringe of Heaven, p. 72.



Original concept drawings for Hotel Titirangi. West Auckland Research Centre Print Collection



Original concept drawings for Hotel Titirangi. West Auckland Research Centre Print Collection



North Elevation Drawing – Hotel Titirangi. Bloomfield Collection, BM3, Architecture Archive, University of Auckland Libraries and Learning Services.

HOTEL TITIRANGI

IDEAL MOUNTAIN GUEST HOUSE 700 FEET ABOVE
SEA LEVEL

Amidst glorious native bush—near golf links and bathing beaches

Just 20 minutes from City on concrete road.

Glorious lounges command magnificent panoramic views

HOT and COLD WATER IN ALL BEDROOMS

Rooms with private bathrooms available

Billiards, Ping Pong Rooms, and Tennis Courts

Ring 14-737, Hotel Titirangi Tariff Moderate

Recently erected,

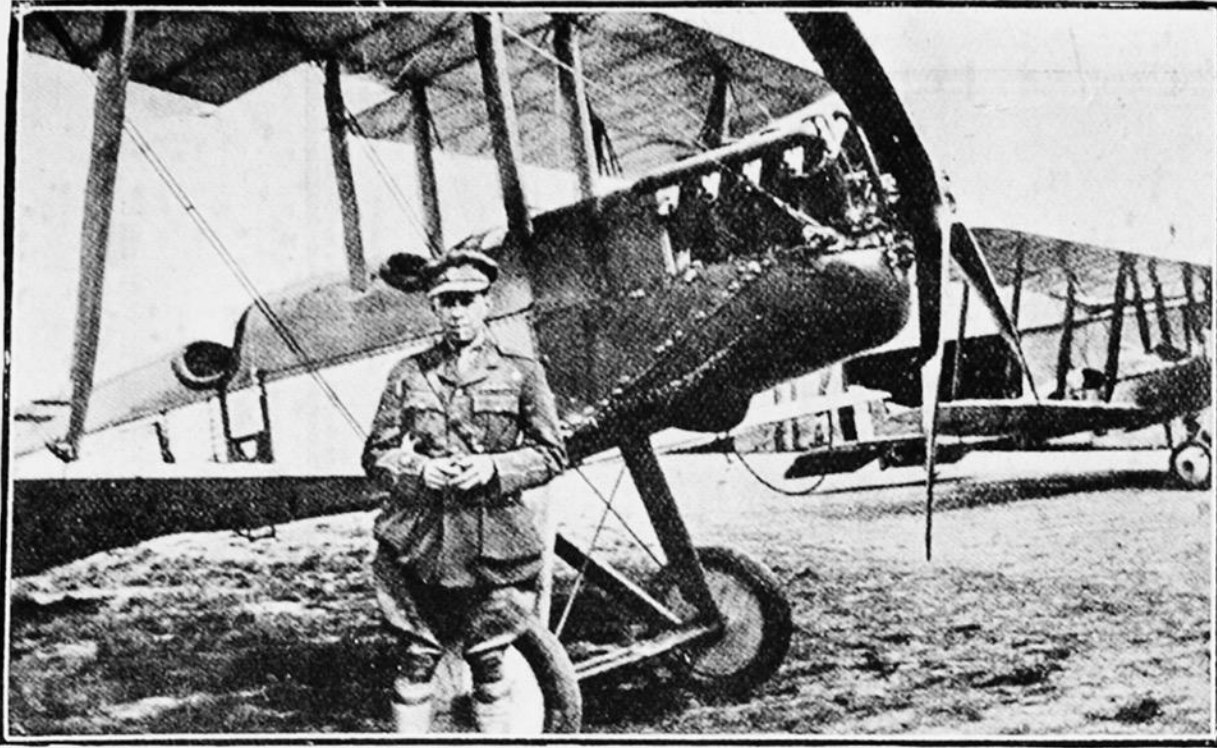
HOTEL TITIRANGI anticipates
the most exacting demands of
Overseas Tourists



A View of the Dining Room



A View from Hotel Roof Garden.



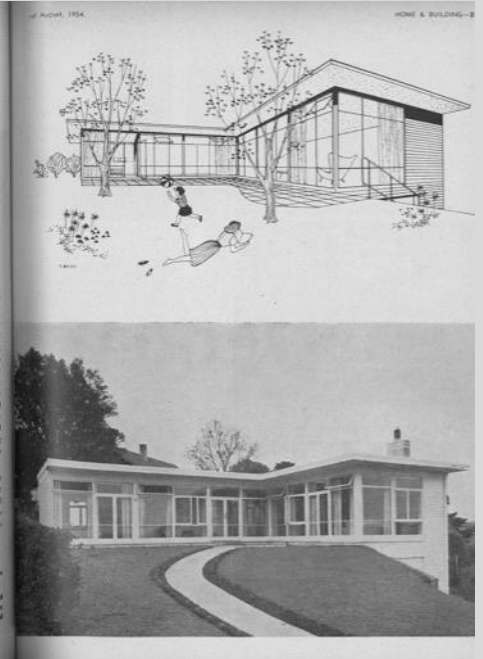
AN AUCKLANDER REPORTED MISSING. FLIGHT-COMMANDER W. S. R. BLOOMFIELD, PHOTOGRAPHED WITH HIS AEROPLANE.



General Buildings, Auckland – completed 1928. Photo: Patrick Reynolds 2018



Binney House. June 1986. Image courtesy of 'Sir George Grey Special Collections, Auckland Libraries. Record ID 1052-H4-13. Copyright: Auckland Libraries.



Bloomfield's design for a house in St Heliers published in Home and Building – August 1954



Clockwise from left: General Buildings, Auckland – completed 1928. Photo: Patrick Reynolds 2018; Interior of Queens Arcade, Queen Street, Auckland – completed 1929. Photo courtesy Queens Arcade Management; The Station Hotel on Beach Road, Auckland – completed 1930. Sir George Grey Special Collections, Auckland Libraries 435-B5-177; Lopdell Precinct. Photo: Sam Hartnett. Courtesy of Te Uru