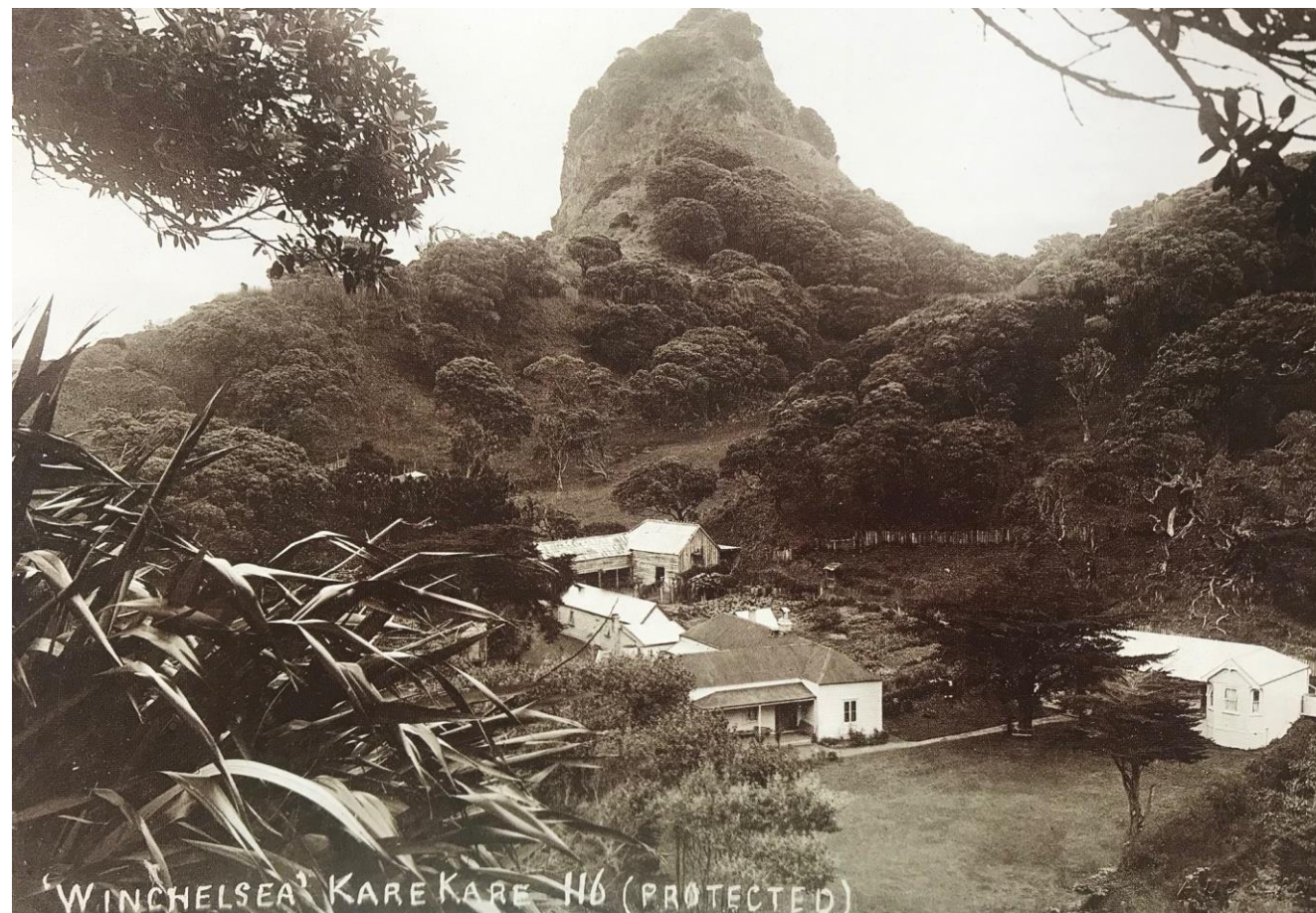


Winchelsea House/ Karekare House

Historical and contemporary
photographs

Karekare: The Watchman early 20th Century



Advertisement for Karekare Guest House

Safe Bathing!
PIHA

CHILDREN
Love the shallow warm waters of the lagoons where they can splash about all day long in perfect safety.
See Your Family. COME TO PIHA.

SURFERS
Thrill to the long Pacific rollers when beach games make for perfect security.
BRING THE FAMILY TO PIHA.

KAREKARE AN UNSPOILED SCENIC GEM ONLY TWENTY-FIVE MILES FROM C.P.O.
Leave Your Car at Home • Forget Petrol Restrictions • Relax • Recuperate
Enjoy your Vacation at—
FARLEY'S WINCHELSEA HOUSE
Where guests mingle in perfect harmony

The Premiere Accommodation House for a Good Holiday!
DAILY MOTOR SERVICE
N.Z.R. ROAD SERVICES, TRANSPORT TERMINAL
Phone 44-500 for Timetable and Bookings,
or Ring or Write FARLEY'S, Phone No. 1, Karekare Bazaar.

Tariff £4/4/-
Daily 13/6.

New Zealand's Finest Camping Facilities are at
AUCKLAND MUNICIPAL MOTOR CAMP
WESTERN SPRINGS

MUNICIPAL GOLF
18-Hole
Right opposite N



Winchelsea and Karekare House 1950's



Winchelsea and Karekare House Today



The Artists Studio – Karekare House



Welcome event at Karekare House



Belinda Griffiths work



Drone image: Judy Darragh's installation



Puppet show by Tom Tuke December '19



Artist Talks at the Pah Homestead 18/4/21



The 2020 Karekare House Residency
Artist Talks

Join Sena Park, Sean McCarthy, Adrian Jackman and Paul V Johnston in an artist talk in the Long Gallery

Sunday 18 April 2.30pm FREE event

THE WALLACE ARTS CENTRE
Pah Homestead
72 Hillsborough Rd, Auckland wallaceartstrust.org.nz
karekarehouse.co.nz edenarts.co.nz



Powhiri for Maori Ceramicists November '20

