



The Burgeoning of Corban Estate Arts Centre



Getting Established

CORBAN ESTATE ARTS CENTER



Assid Corban as a young man

CORBAN ESTATE ARTS
CENTRE



Assid Abraham and Najibie Corban



The early days tying vines

CORBAN ESTATE ARTS CENTER



The Homestead under construction
around 1923

CORBAN ESTATE ARTS CENTRE



Corban Estate Aerial Shot 1940's

CORBAN ESTATE ARTS CENTRE



Aerial photograph of Corban Estate

CORBAN ESTATE ARTS CENTRE



The Corban Estate 2004



Fire burns down the World Rooms in April 2004



Demolition in May 2005 after the fire in 2004



Fatu Feu'u sculptures created at the
Pacifica Arts Centre



MAU Dance Theatre based on the Estate



The Crowd at the Heritage Festival

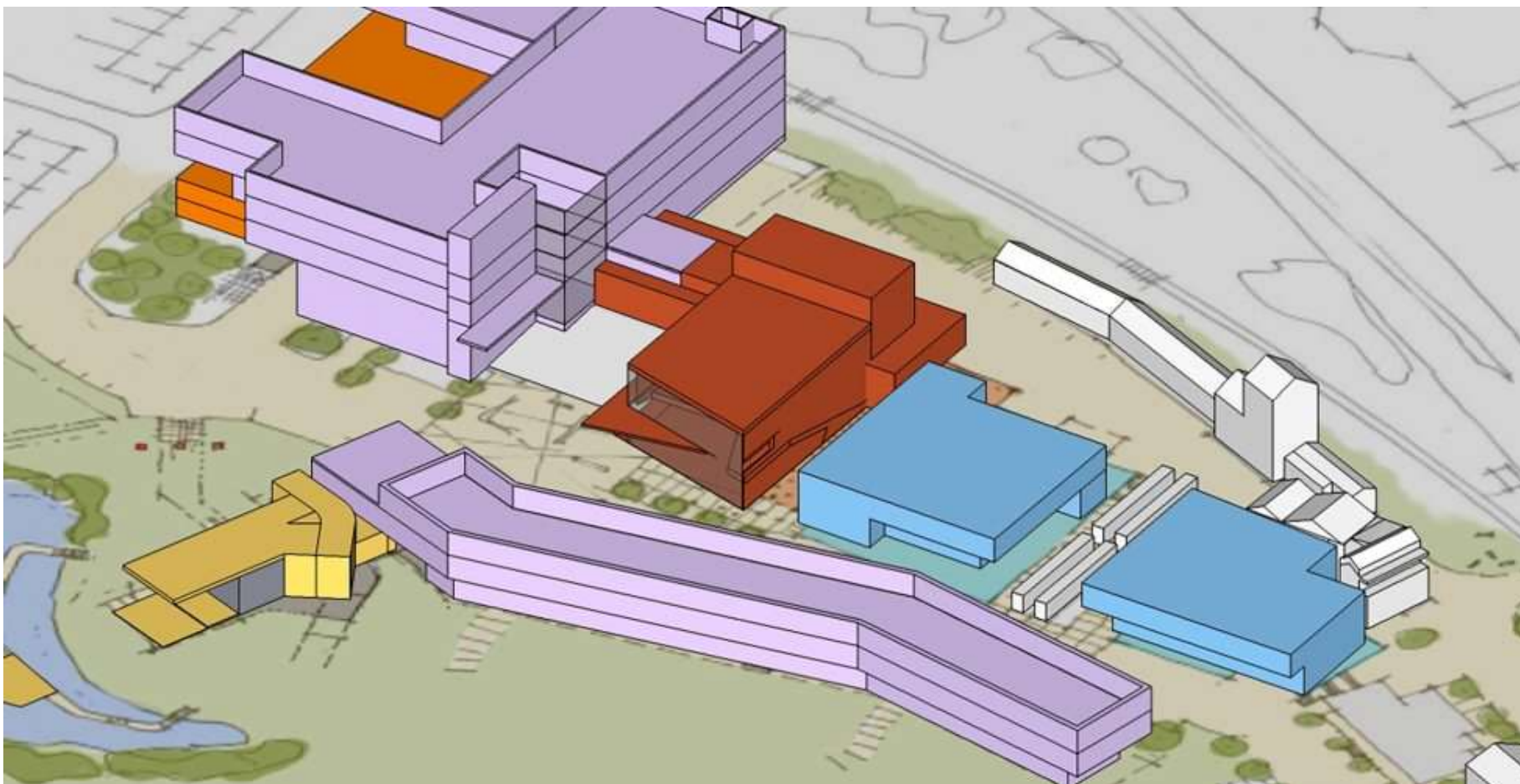
CORBAN ESTATE ARTS
CENTRE



Neil Miller Arts Bridge from Corban
Estate to Henderson Park



Refurbishment to create Opanuku
Studio 2004



The Project with Unitec 2007



Architect's impression
of Unitec at Corbans

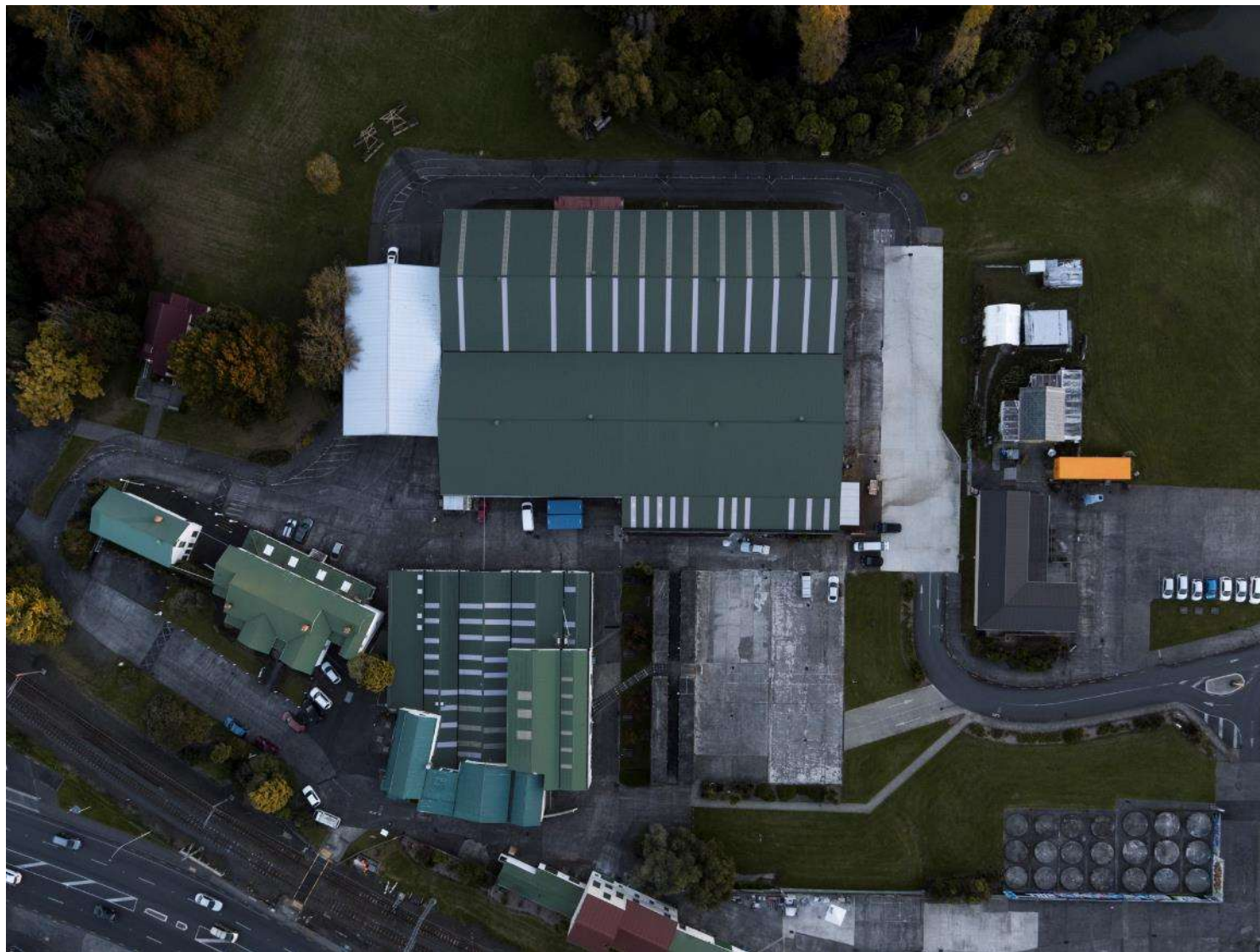


Being Relevant



The Homestead at sunrise

CORBAN ESTATE ARTS CENTRE



Taking a bird's eye view



Sculptor Nate Saville in his studio



Holiday Class children
on Moana the eel



A crowd at the Kids Arts Festival, an annual event



Flax flowers by the Pacifica Mamas



Atamira Dance Company
open rehearsal



Paper Sky by Red Leap Theatre 2011



Henderson - the worst tagged suburb
in Auckland

CORBAN ESTATE ARTS
CENTRE



Kakano Youth Arts Collective



A place for youth - Fresh Movement



Mixit refugee youth performing arts



Event series for youth about mental health - Let's Talk About It

CORBAN ESTATE ARTS
CENTRE



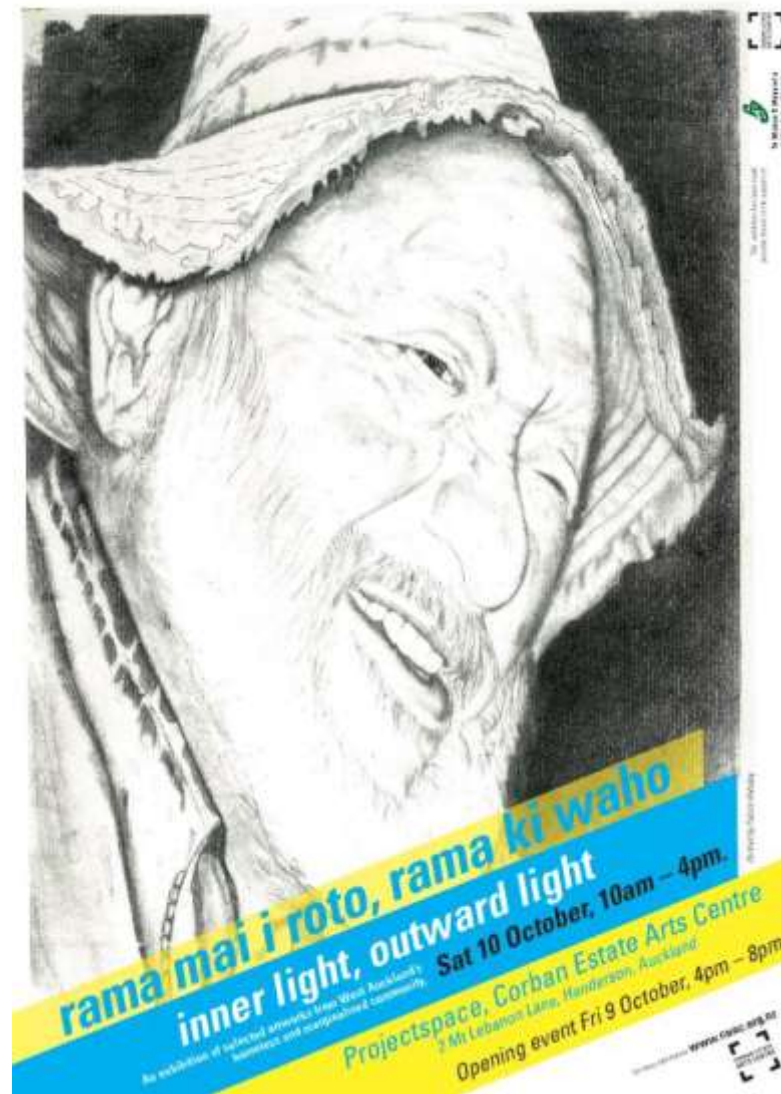
Crescendo Trust
mentoring youth into music



Westside Tales Youth Theatre



Our Contribution

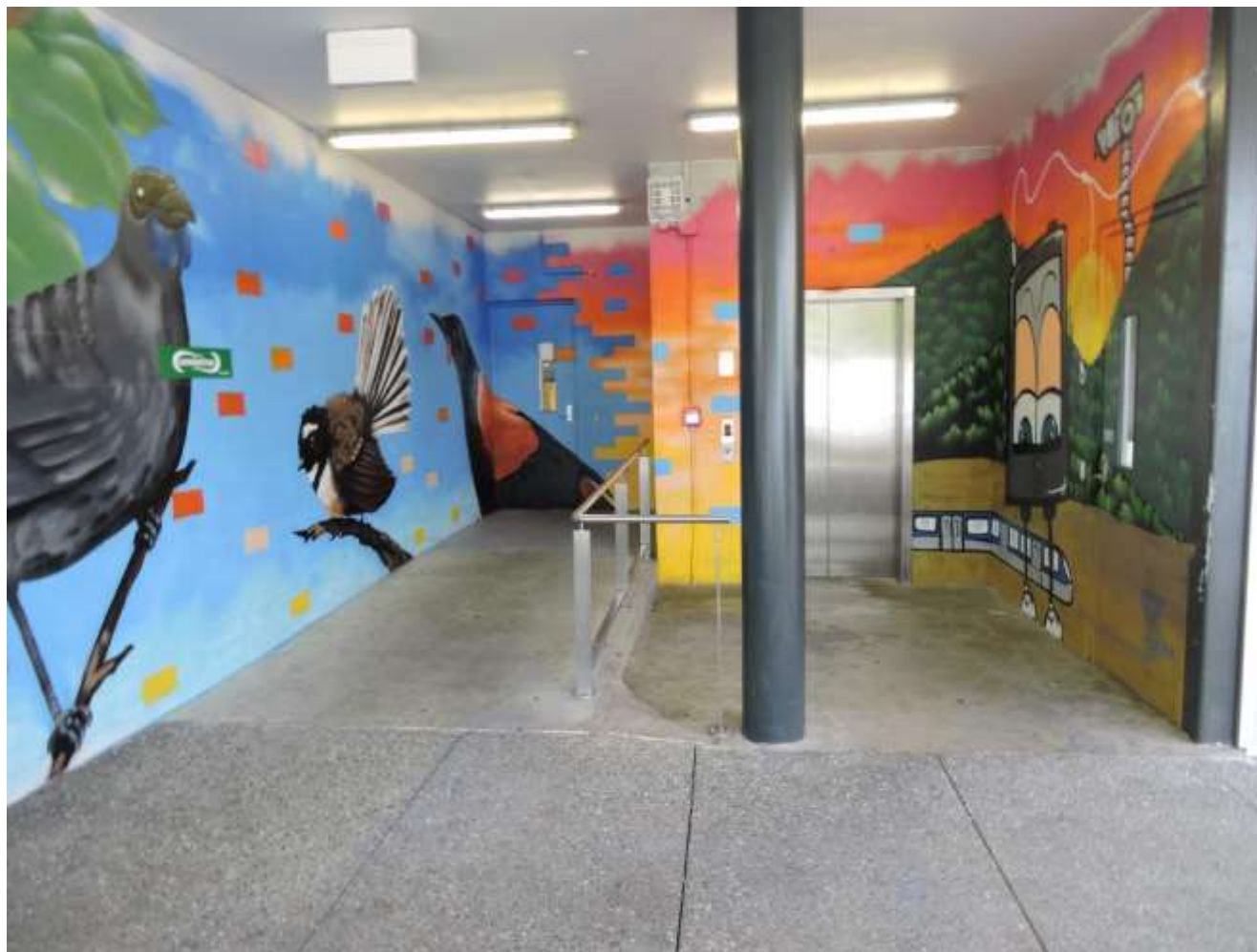


A Project with Henderson's Homeless



Performers at the first VIBE Youth
Festival 2017

CORBAN ESTATE ARTS
CENTRE



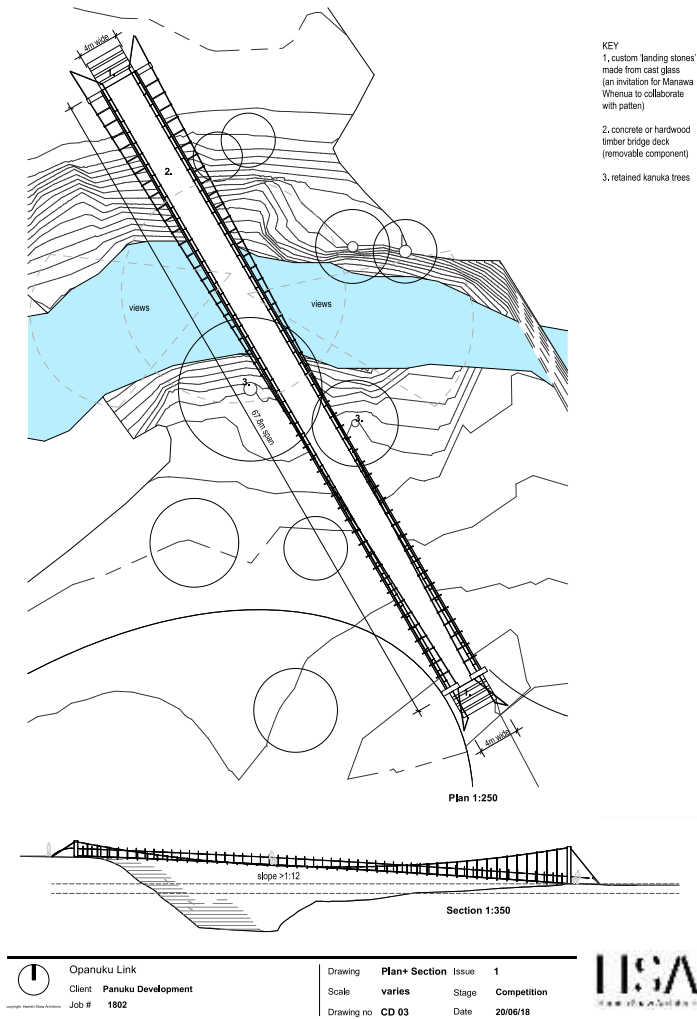
Mural outside Henderson Library by
Kakano Youth Arts Collective

An abstract artwork featuring a grid of thick black lines on a light gray background. The grid is filled with various colorful splatters, including red, blue, yellow, and black. There are three small, square, colorful patches: one in the top-left, one in the top-right, and one in the bottom-right. The overall style is expressive and chaotic.

Our Future



Panuku Developments - Opanuku pedestrian bridge



Opanuku Bridge

design by Hamish Shaw



Te Pou Theatre in New Lynn



Te Pou Theatre

The Maori Side Steps



Sheds 1 & 2 - theatres, rehearsal
space, bar cafe



Whaotapu residency in the Silos,
Wynyard Quarter



Bangarra Dance Company Australia - Indigenous connections



Corbans studio artist, Rosanna
Raymond and Savage Klub



Audience enjoying the
VIBE Youth Festival 2017



Kakano involved in their studio practice



Kakano as a social enterprise -
Contracts with Kiwirail



Mixit refugee youth performing arts at
Vibe Youth Festival 2017



Your Questions