

Characters of the Waitakere Ranges

Sandra Coney

The People of the West Conference

Sunday 8 October 2017

- Frederick Judson at Waiatarua
- Martin & Agnes Saunders on the West Coast Road (Piha Rd)
- Sylvana & John Byles on the West Coast Road
- William & Emily Nutting at Simla

Frederick Judson



Frank Edger.



Miss K. Edger.
(Mrs Evans)



Miss E. Edger.
(Mrs Hemus)



Rev Samuel Edger.



Miss Lillian Edger.



Miss M. Edger.
(Mrs F Judson)



Frederick Judson.



John Legge.



Mrs John Legge.



William Partridge.



Mrs W. Partridge.

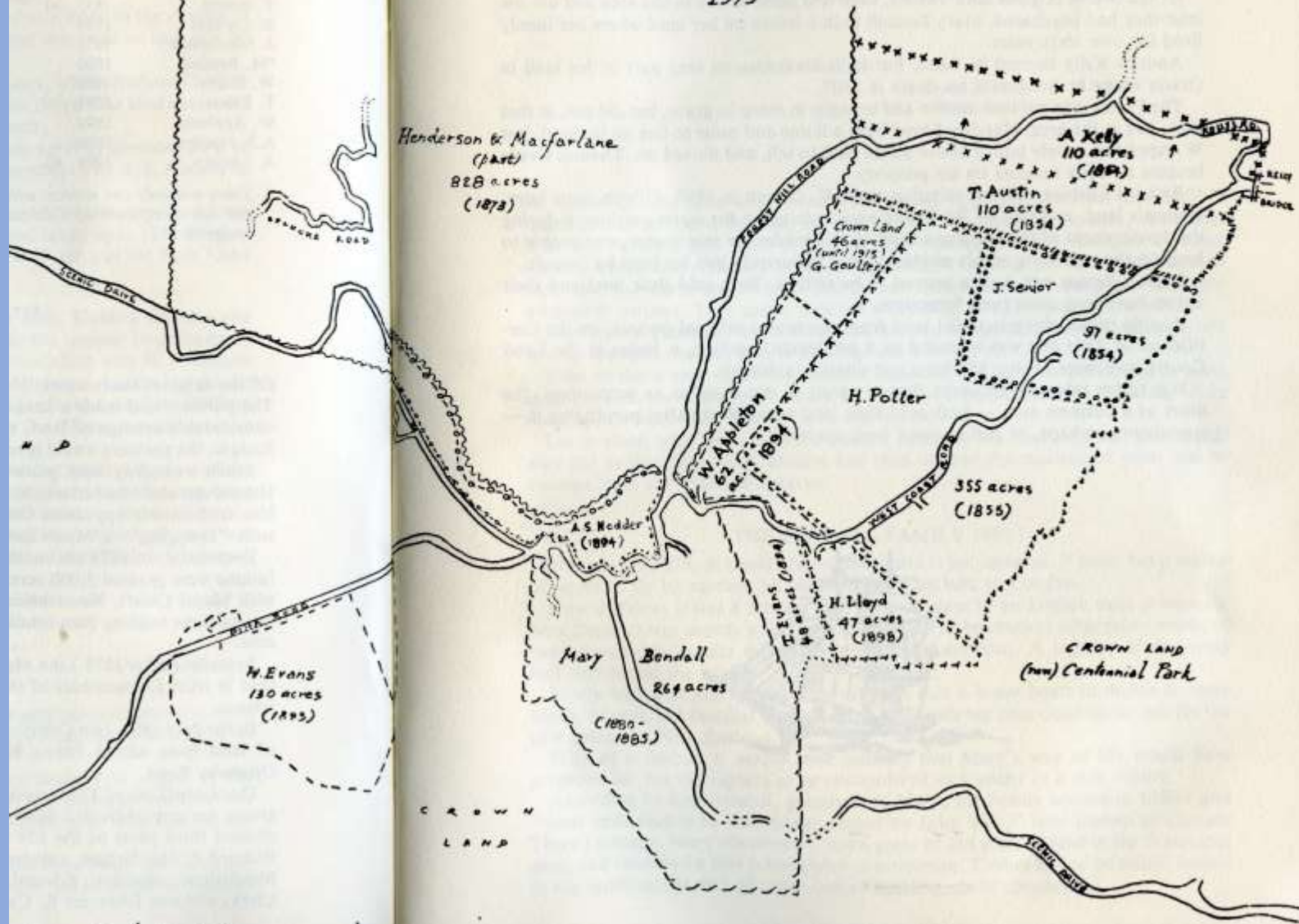
Rev S. Edger's Family, and Members of his Party.



MISS DORA JUDSON,
A promising Auckland Pianist.
(See "Drama.")

Area of Waiatarua
Original Land Grants- 1850-1900

Drawn from original material
by D. J. Wade
1979















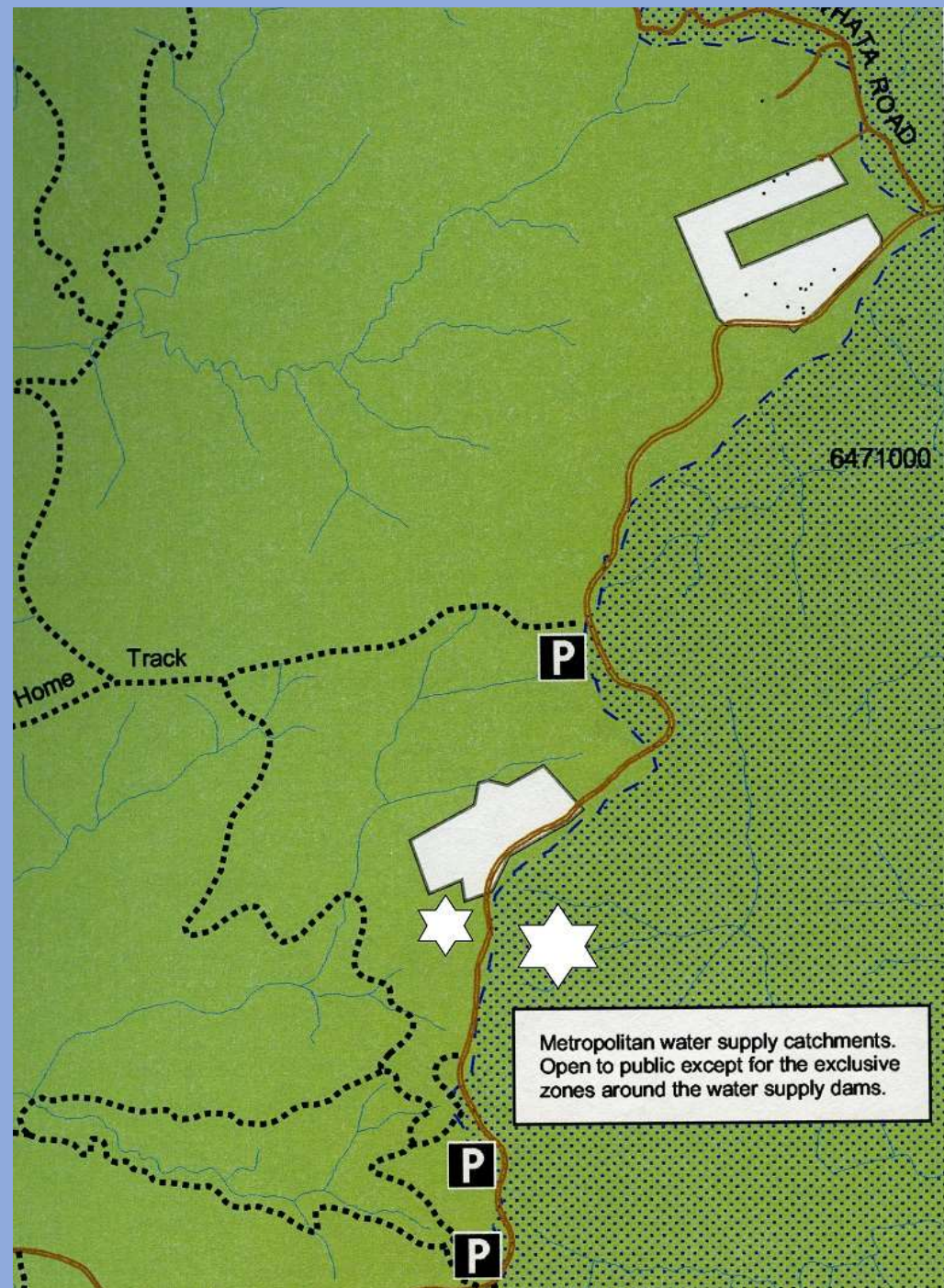








Agnes and Martin Saunders

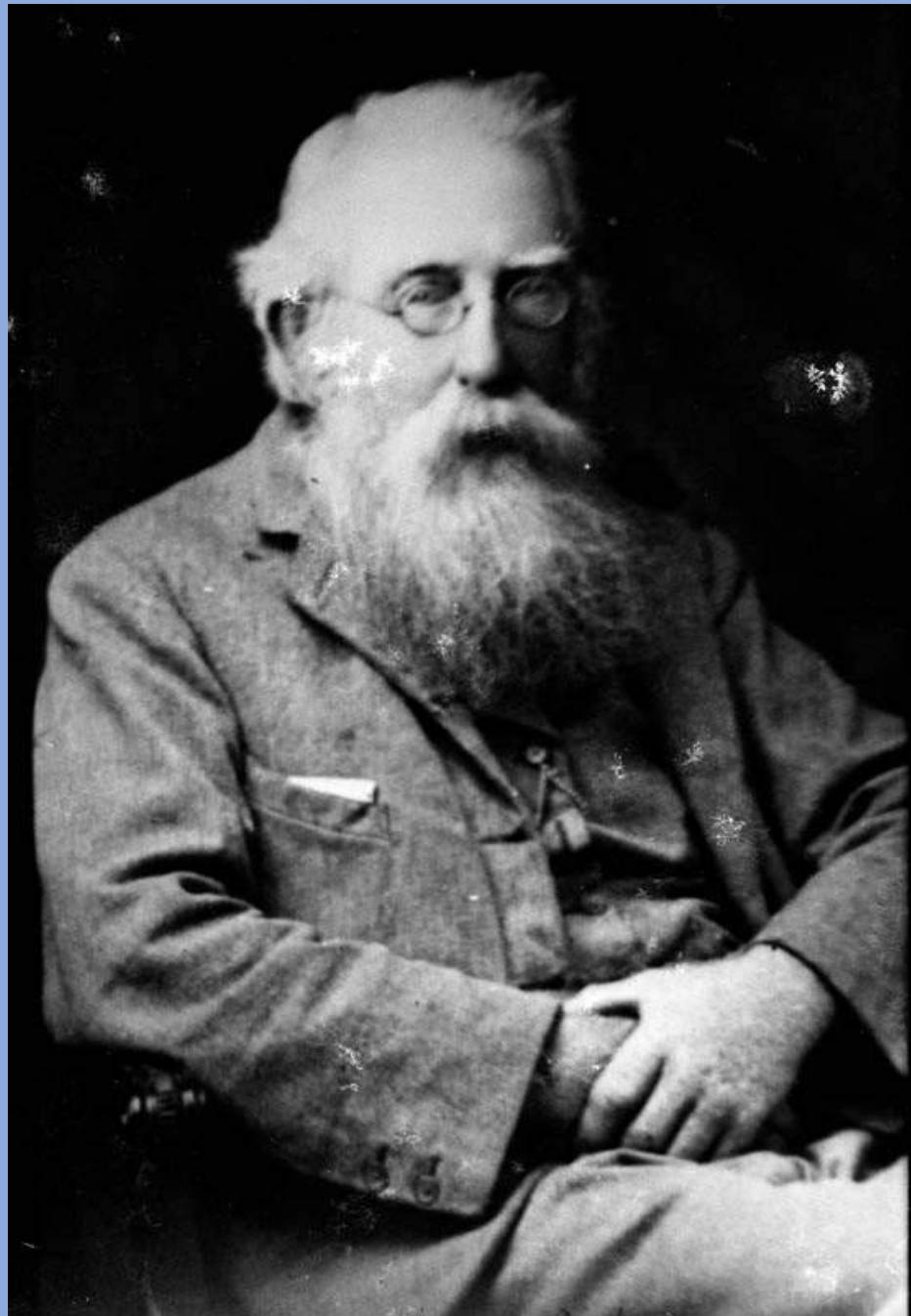


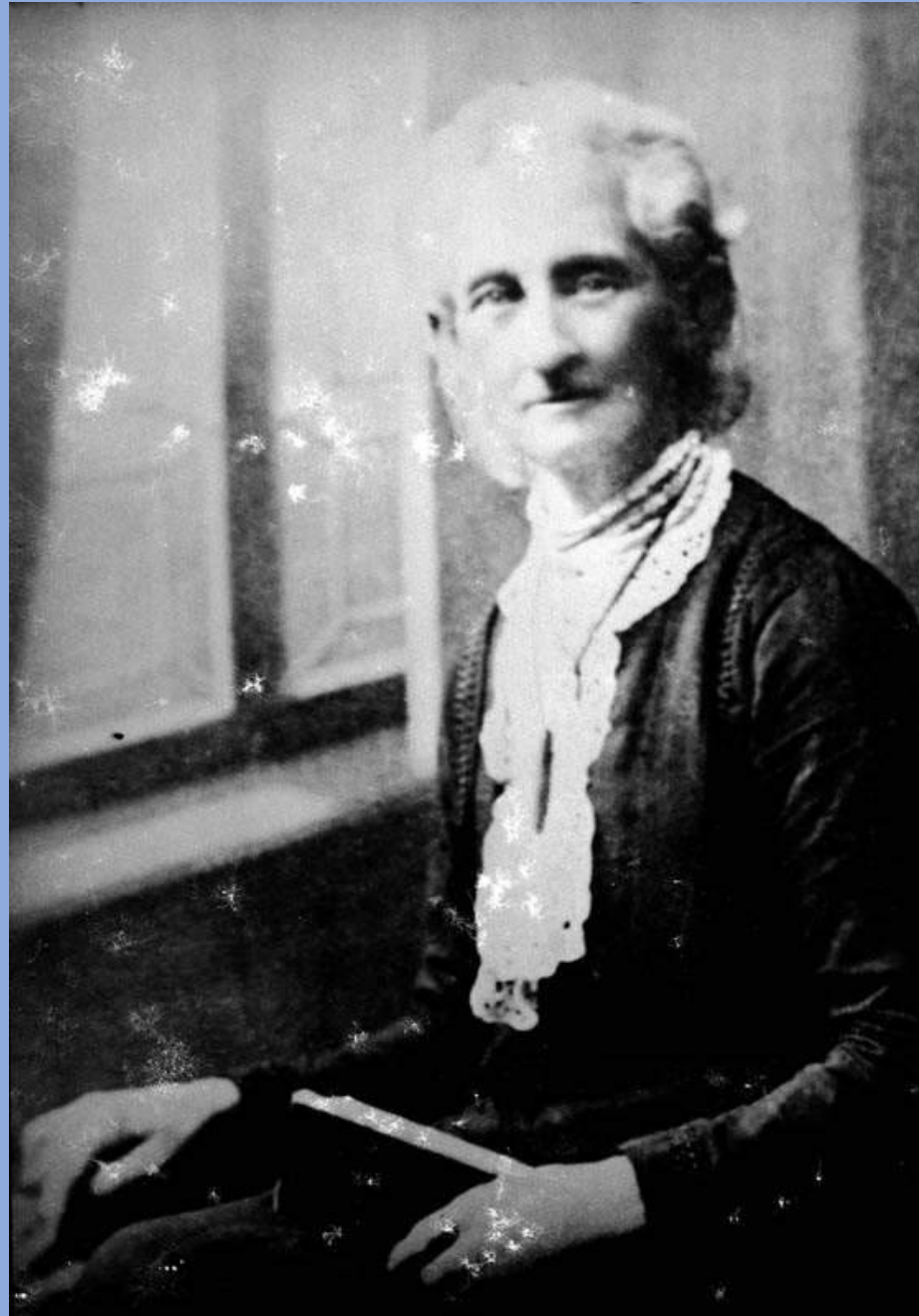




Sylvana and John Byles





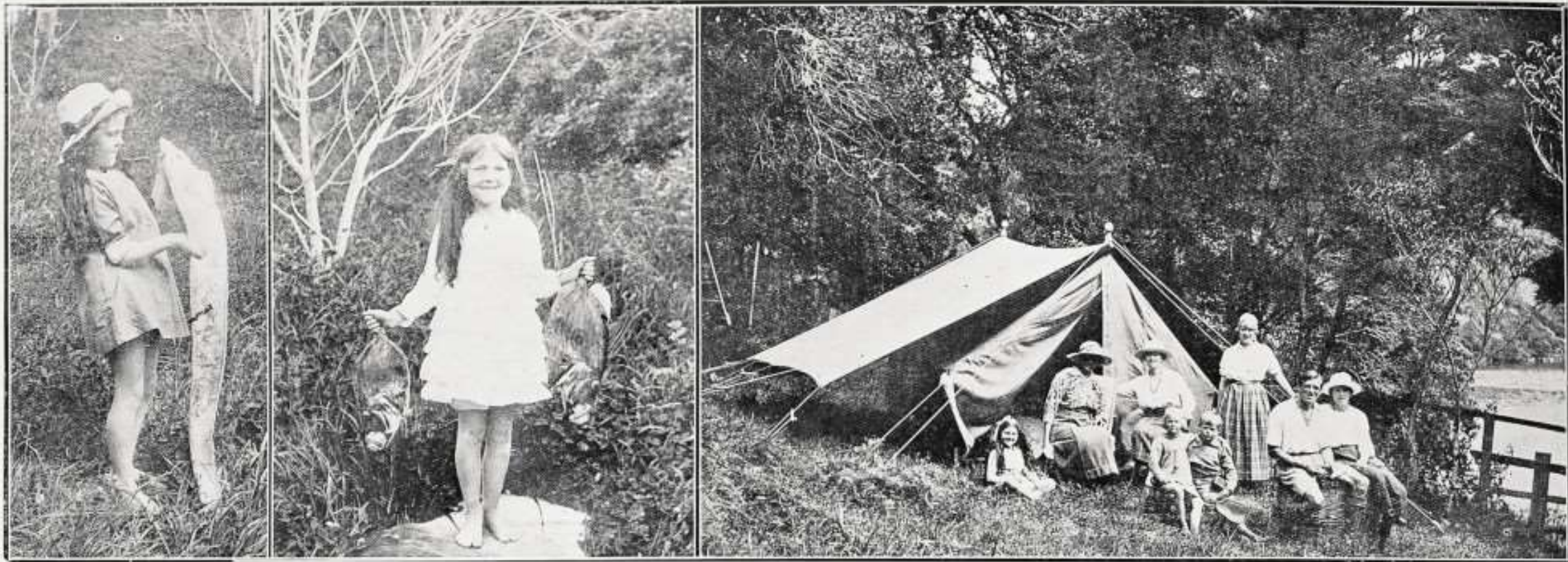


Emily and William Nutting









THE APPROACH OF THE SUMMER SEASON IN AUCKLAND: A JOLLY CAMPING PARTY AT WHANGAPARAPARA, GREAT BARRIER ISLAND.

W. T. Nutting, photo.











1.055

Images - sources

- Private collections
- West Auckland Research Centre
- Sir George Grey Special Collections
- West Auckland Historical Society
- Albertland Museum
- Jeanne Wade
- Sandra Coney photos