

THE LEADING LADIES

A small group of women, born around the last two decades of the 19th century and who can take much responsibility for pioneering, in New Zealand, the use of clay for artistic purposes as studio potters.

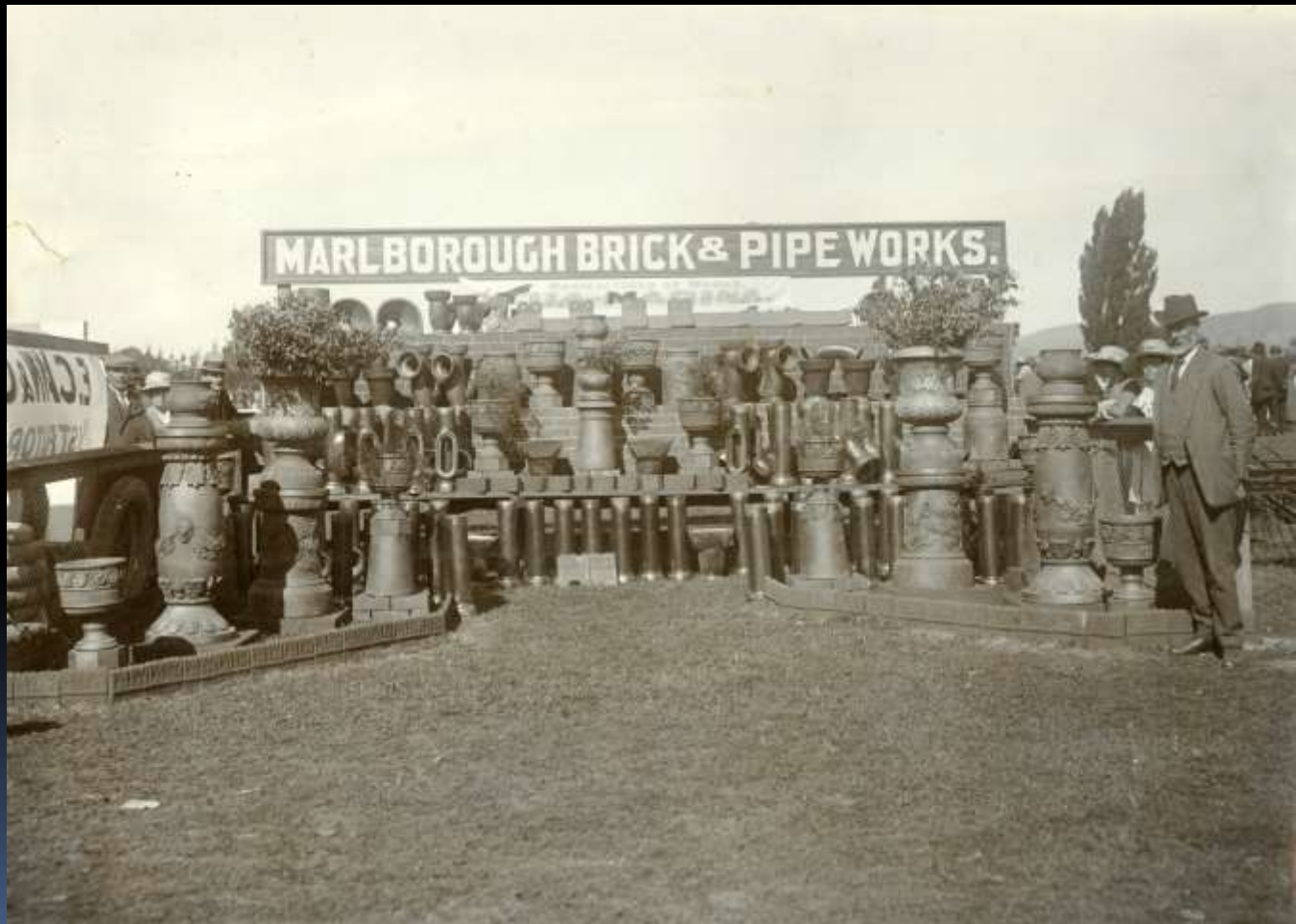
- *Moyra Elliott*



Hanley, Staffordshire, C1905



Longton, Staffordshire,
C.1885



Briar Gardner: 1879-1868

Briar Gardner, two portraits



150











Notes



















Elizabeth Matheson: 1890-1978



top page: Elizabeth Matheson at her studio, 351B-5, Haver's Bay Daily Mail, Stanley Hastings District Council

middle page: Copper body, c.1928, collection of Haver's Bay Museum Trust, Banham T3-6-range, 2013/18

bottom page: Early ceramics, 1930s, Courtesy of Mary Knolly Strang, McNamara Collection, Simon Manchester Collection and Andrew Gifford

top right: Ceramics from the Commercial Collection, 1939-48, McNamara Collection, Simon Manchester Collection, and collection of Haver's Bay Museum Trust, Banham T3-6-range



















Olive Jones: 1893-1981





























Olive by Gwenda Jones



Elizabeth Lissaman: 1901-1990























Minnie White: 1891-1984







Mrs A. L. Edwards ?

