

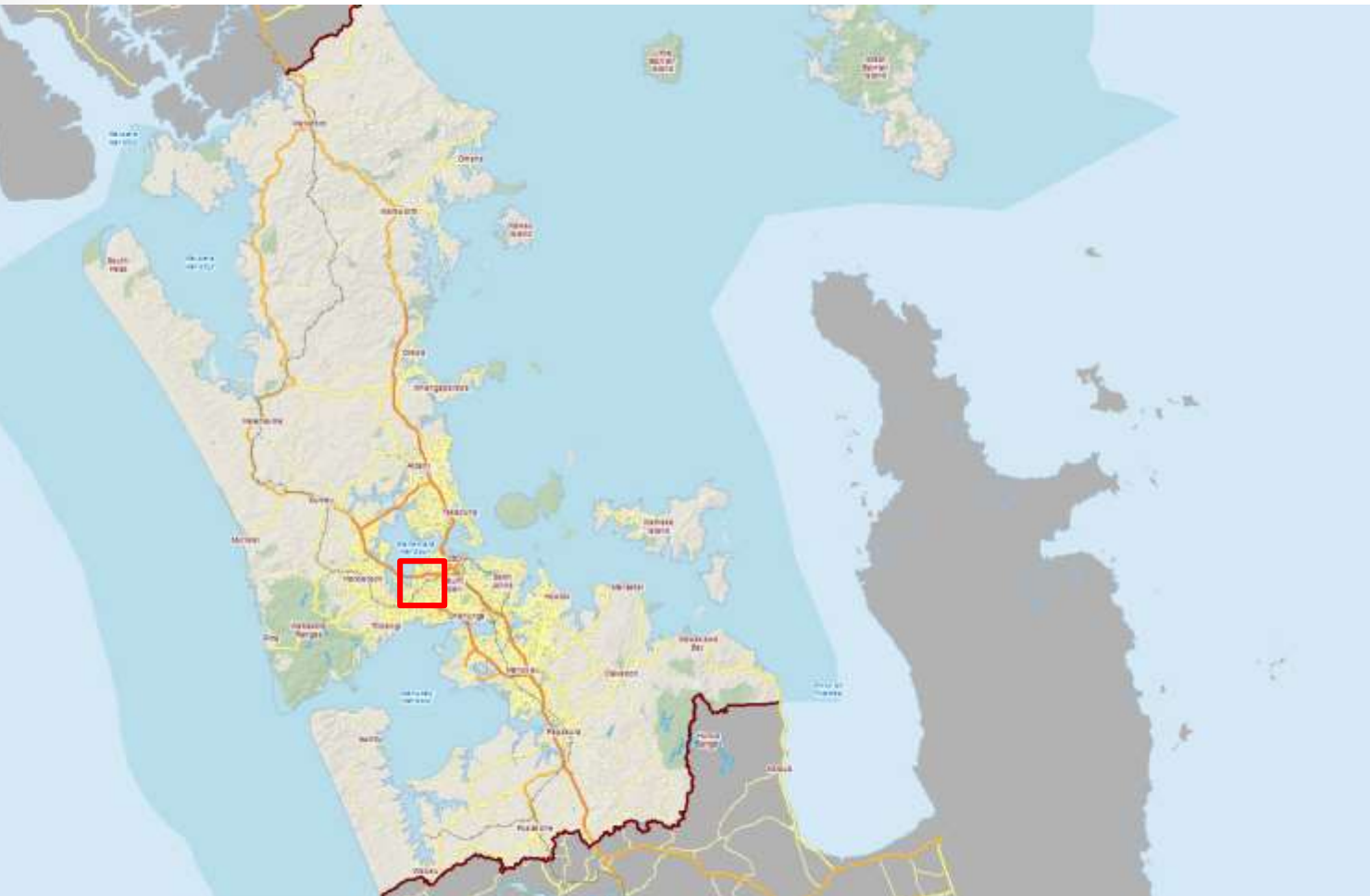
Archaeology of the Waterview Connection Project

Glen Farley

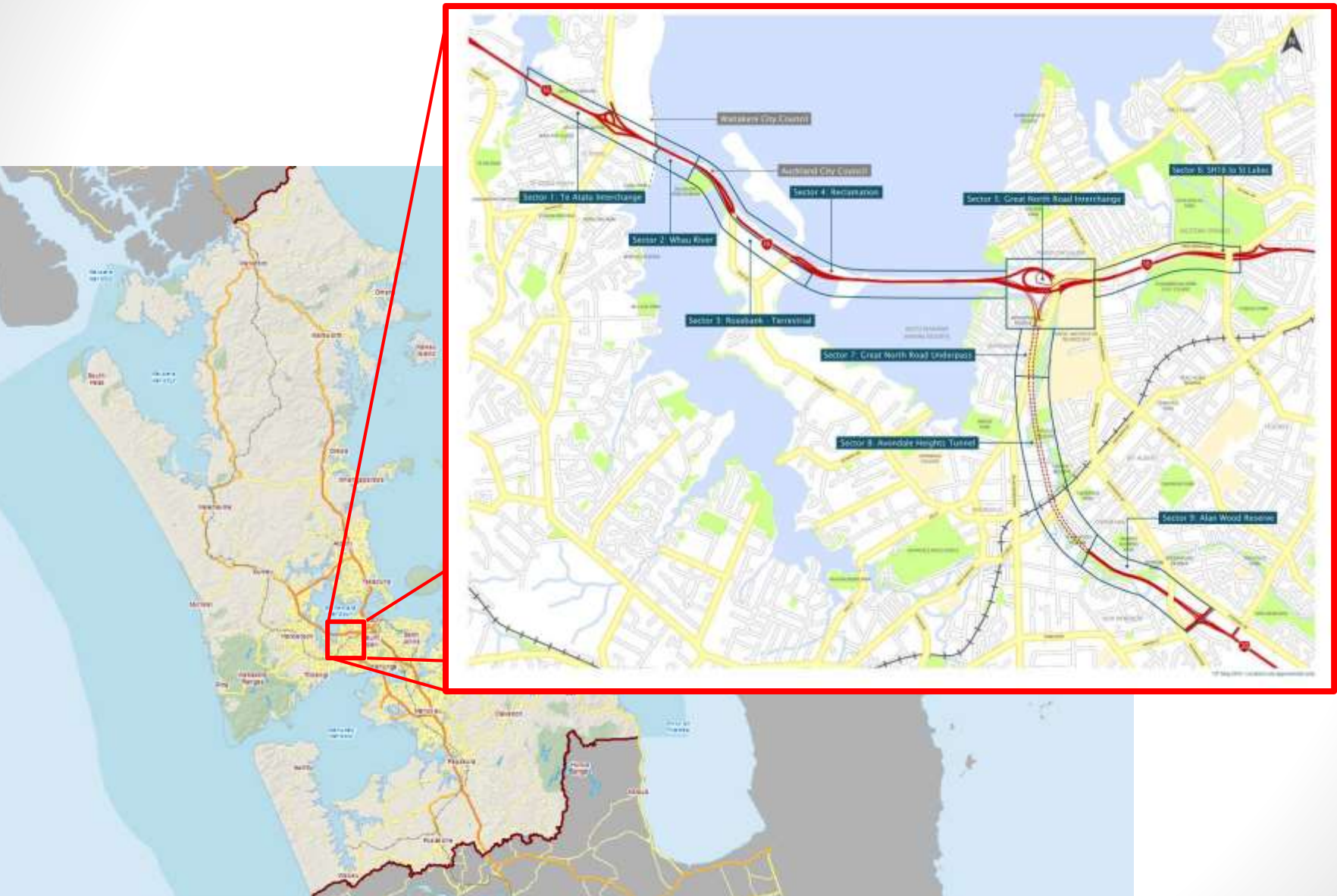
Project Background

- The Waterview Connection Project is one of the RoNS, with the aim of completing the Western Ring route linking State Highways 16 and 20.
- In addition to the tunnels and interchange ramps the project also upgraded several cycle and walking paths.
- Initial work began over a decade ago, with a series of archaeological surveys along the route options.
- In 2010 the Archaeological Assessment was completed, which reviewed these surveys, compiled historical research, and assessed the likely impacts.

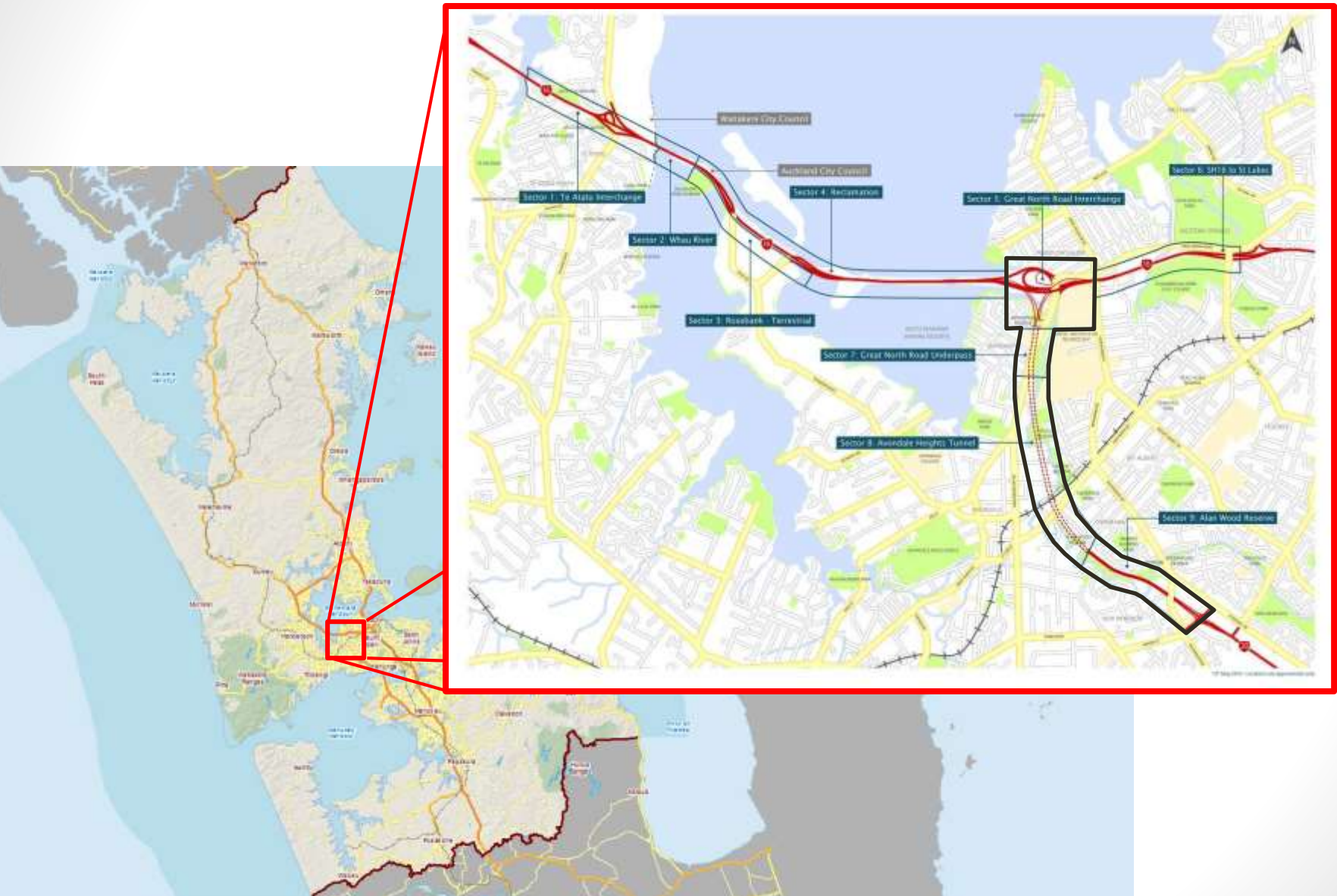
Location



Location



Location

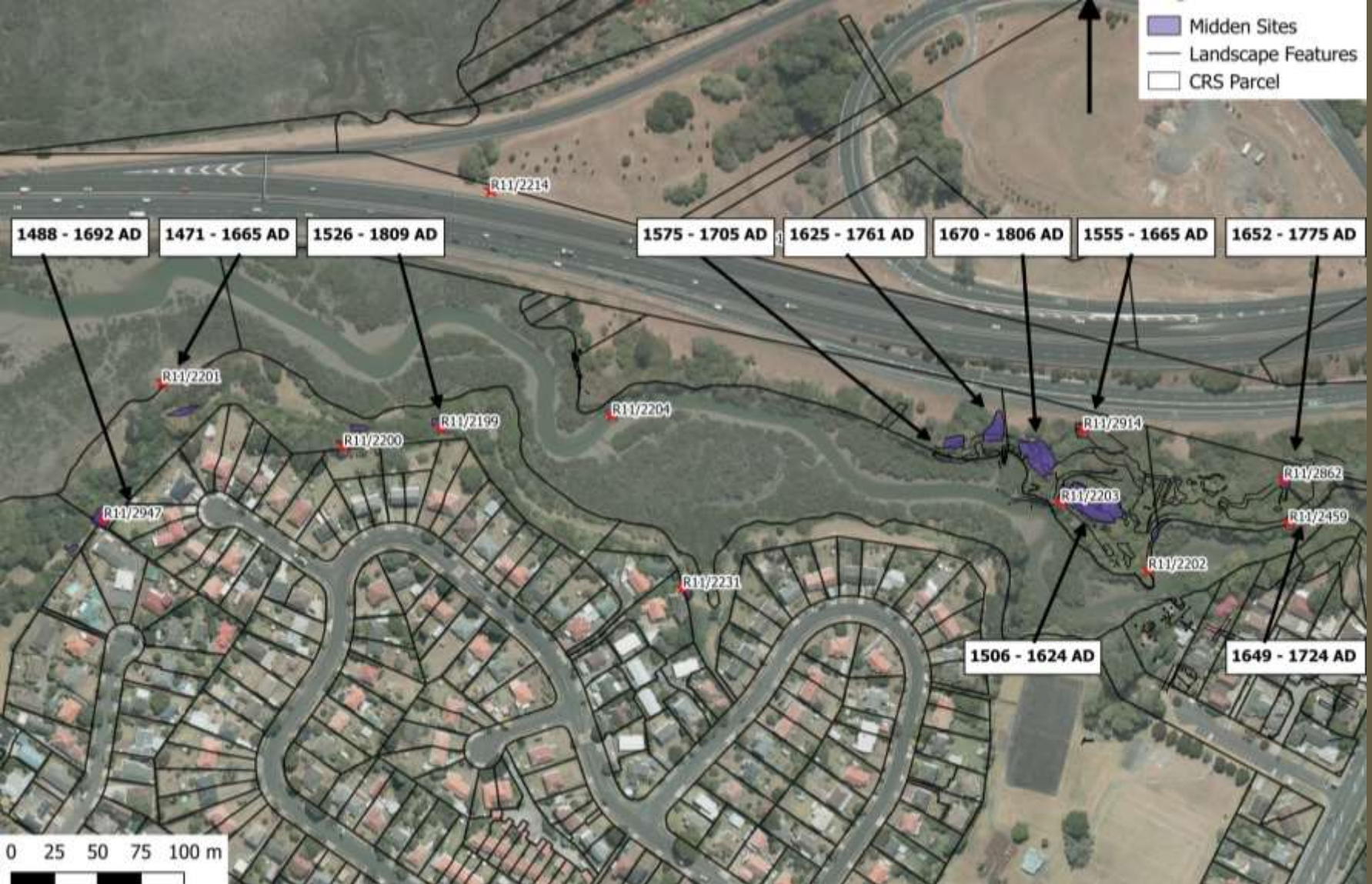


Expectations

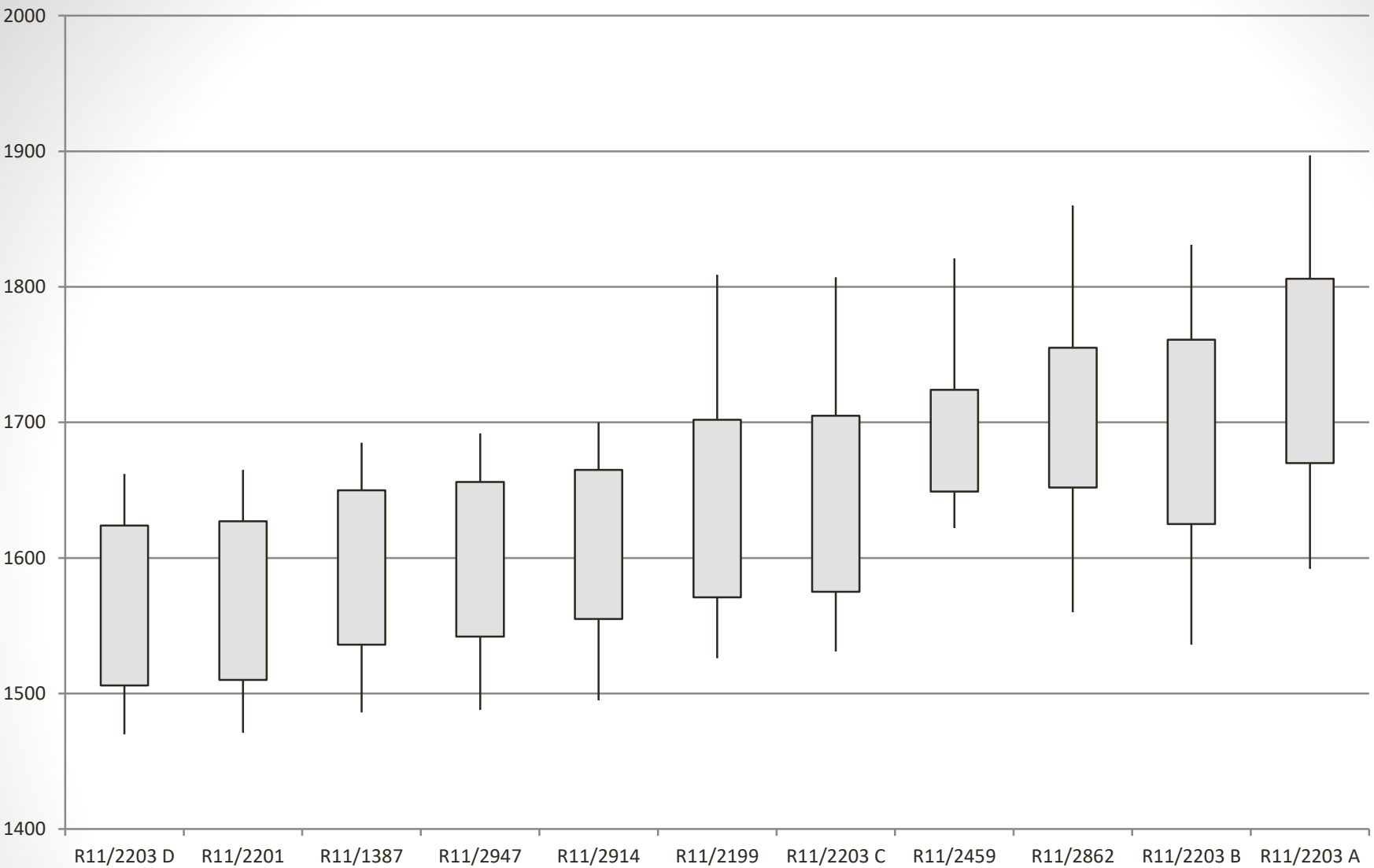
- The archaeological assessment identified 37 recorded archaeological sites in the vicinity of the tunnels and interchange.
- Twenty of those sites were deposits relating to prehistoric Maori occupation.
- The remaining seventeen sites relate to colonial European occupation.
- Eight of these sites were thought likely to be affected, six being prehistoric Maori and two being European.

Maori Settlement





Midden sites along Oakley Creek with radiocarbon results



Radiocarbon results from Oakley Creek

Thomas's Flour Mill



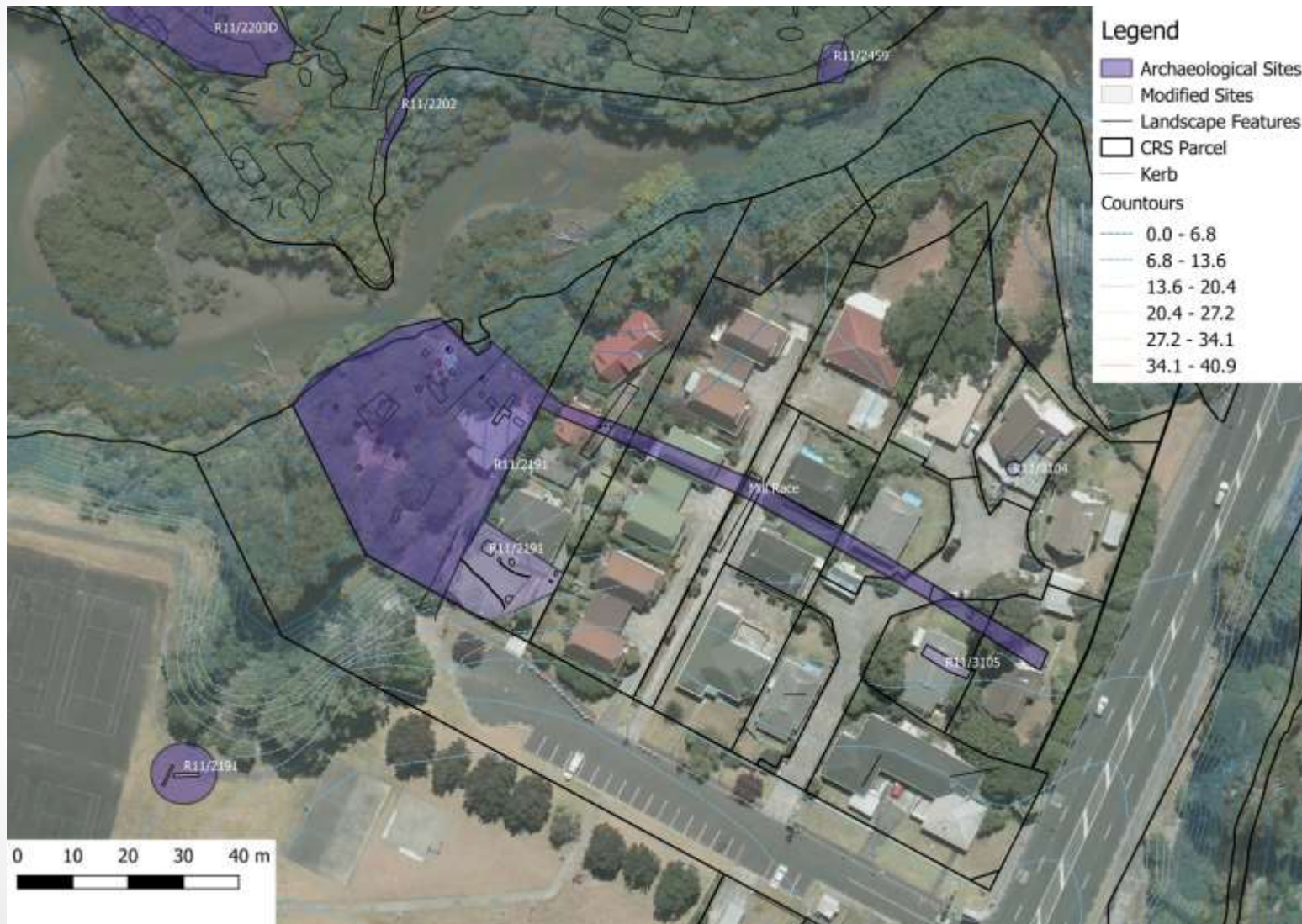
New Zealand
Graphic and
Ladies Journal,
10/9/1898
p.332,
Auckland
Public Library
A1683)

Thomas's Flour Mill



Weekly Graphic
and New
Zealand Mail,
11/8/1909,
p.17, Auckland
Public Library
A1730

Mill Site Extent



Mill Site Extent

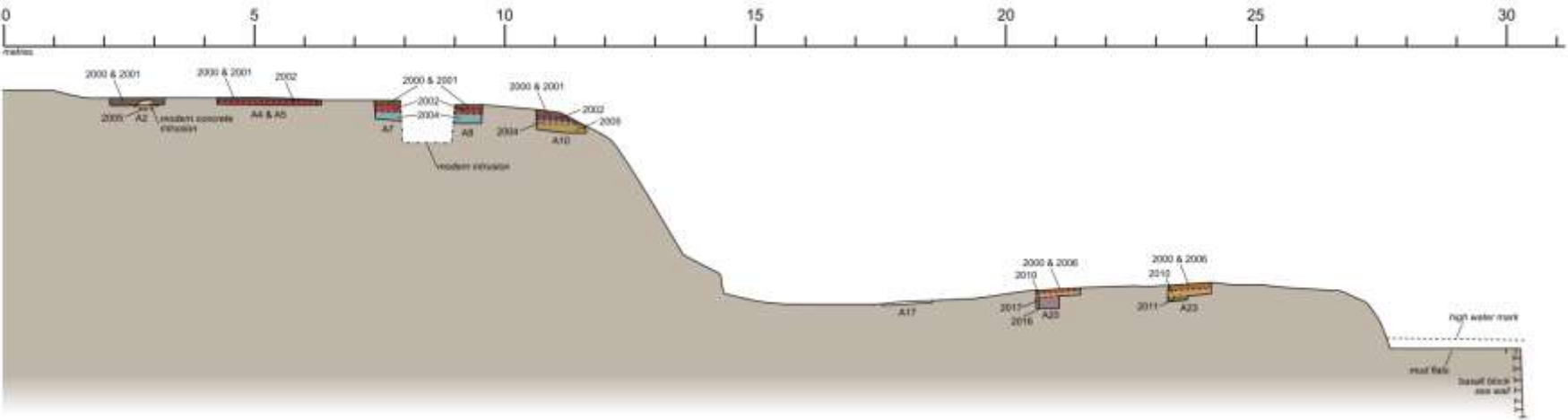




Site Section Drawing

Waterview

North Facing Section of 15 Cowley St, Upper & Lower Level



Key

	2000 & 2001 Turf & Dusty silt		2006 Natural topsoil
	2002 Track Surface		2010 Shell working surface
	2004 Mixed fill layer		2011 Buried topsoil
	2005 Natural topsoil		2017 Cut backfill



Artefacts



Artefacts



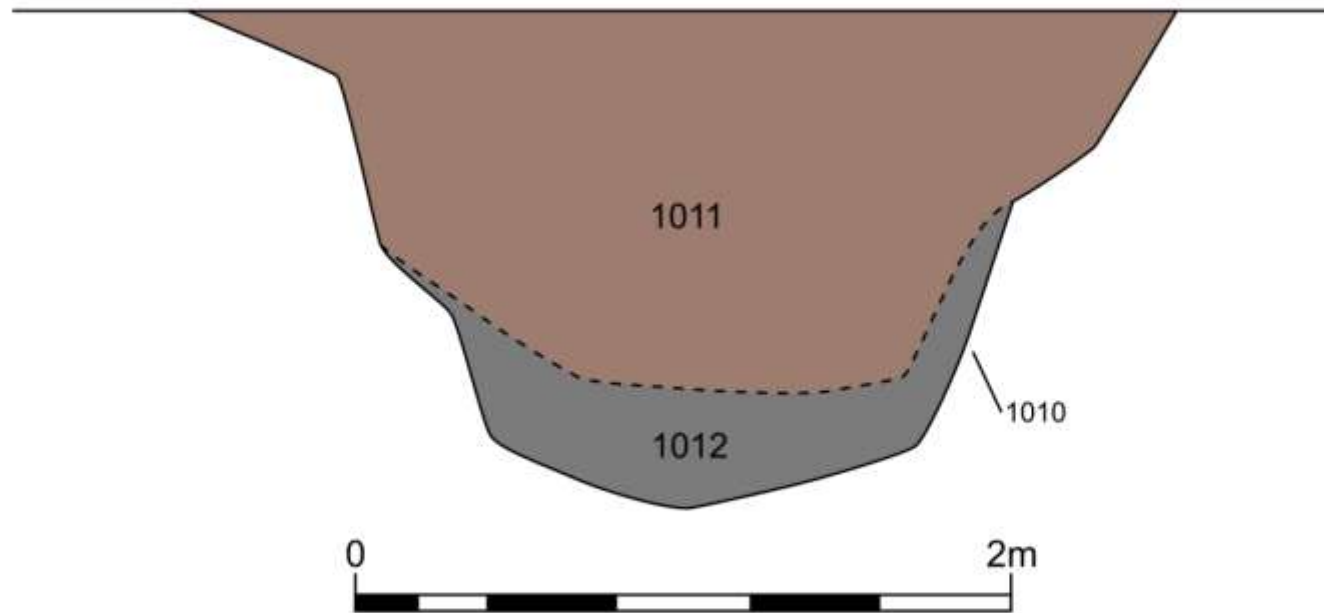
Mill Race




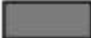
Mill Race

Waterview

West Facing Section of Mill Race

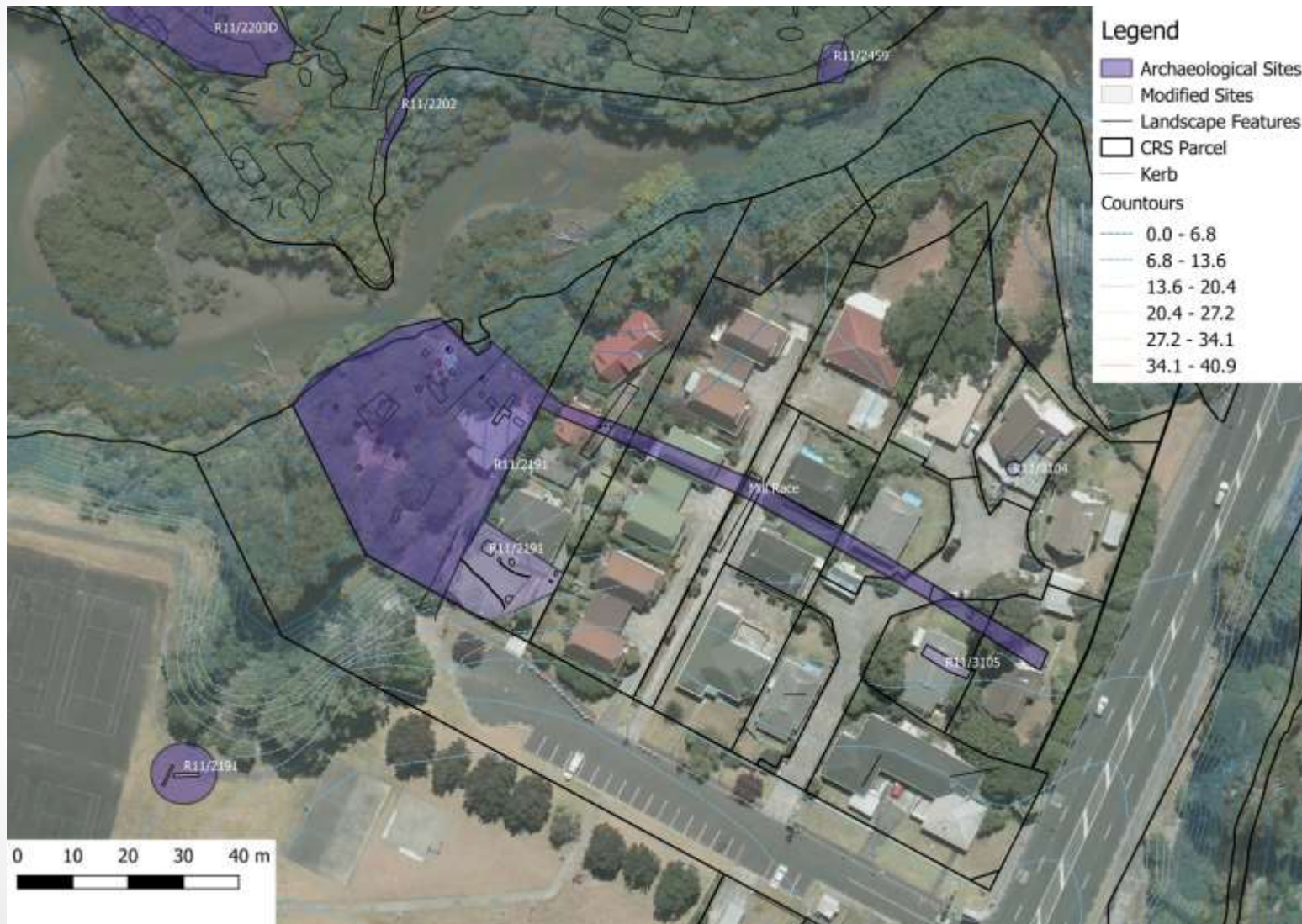


Key

-  Mill race secondary backfill
-  Mill race primary backfill



Brickworks Site Extent



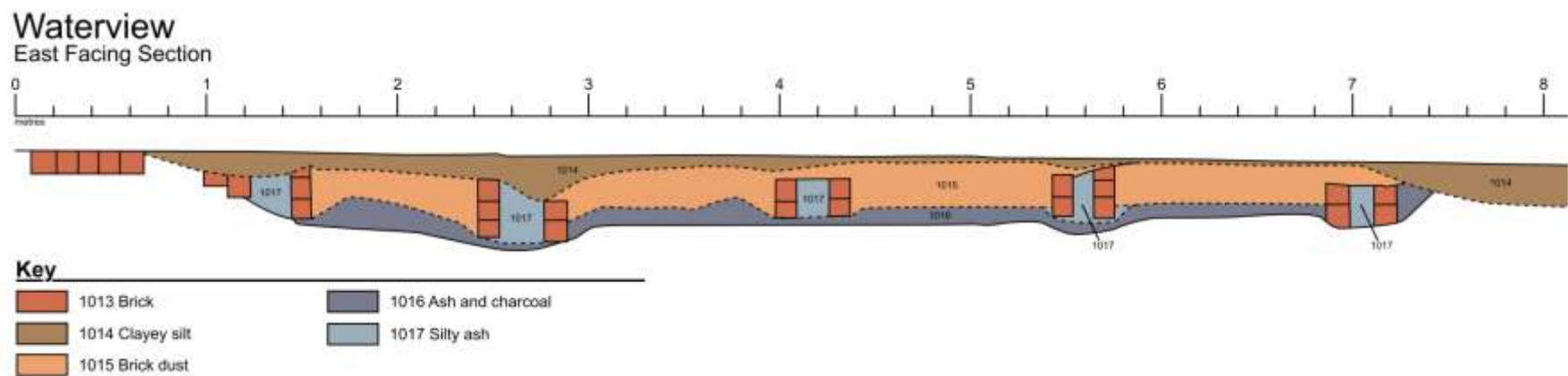
Brickworks Site Extent



Brickworks



Brickworks Section Drawing



Well Site Extent



Well Site Extent



Well



Artefacts



Quarry



Quarry

Oblique aerial view facing north showing concrete quarry structure and main quarry lake, dated 1945 (source: WA-01749-G)



Quarry

Oblique aerial view facing east showing concrete quarry structure and main quarry lake, dated 1947 (source: WA-05717-G)



Quarry

Aerial photograph,
dated November
1955, of Point
Chevalier entrance,
showing the
development of the
North-Western
Motorway, Auckland
(source: Whites
Aviation Ltd:
Photographs. Ref:
WA-39903-F.
Alexander Turnbull
Library, Wellington,
New Zealand.
[http://natlib.govt.nz/
records/30113959](http://natlib.govt.nz/records/30113959))





