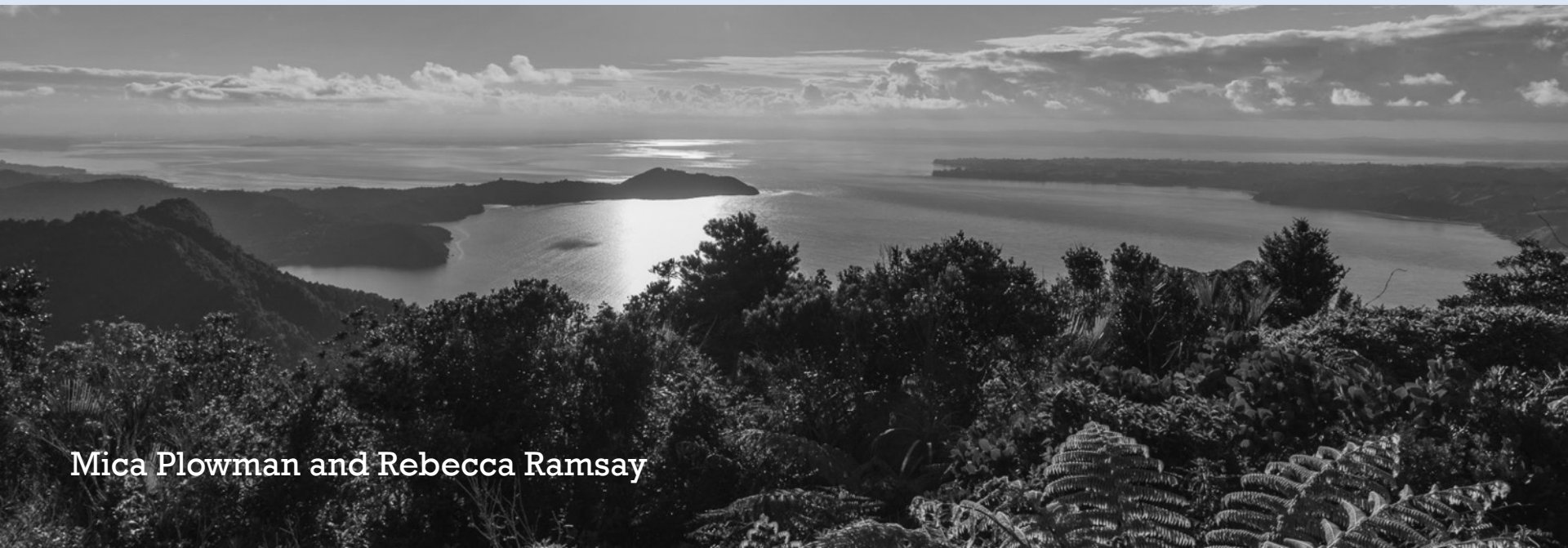


# **Waitakere Ranges Heritage Area – Historic Heritage Upgrade Project**



Mica Plowman and Rebecca Ramsay

# Waitakere Ranges Heritage Area Historic Heritage Upgrade Project

This presentation provides an overview on:

- Why we are doing the WRHA Historic Heritage Upgrade project?
  - Legislative context
  - Background
- Recent Results
  - 2015-2016 field survey results to date - illustrative overview of coastal reserve sites
  - Preliminary data results – value of historic data and imagery
  - Future directions - What we might do next ?

# Waitakere Ranges Heritage Area



- Comprises almost 28,000 hectares of public and private land on the western periphery of Auckland city
- Includes the entire Waitakere Ranges Regional Park
- Established in 2004 to inform decision making and protect the resources of the area.

# Waitakere Ranges Heritage Area Act (2008)

- The 2008 Waitakere Ranges Heritage Area Act (WRHAA) recognises the national significance of the Heritage Area and the Regional Park
- The WRHAA operates within existing legislation and is administered by Auckland Council.
- In achieving the objectives of the Act, provision is made for regular State of the Environment (SOE) monitoring and reporting on the areas unique natural and cultural heritage resources (section 34 item 2(a))

# 2013 State of the Environment (S.O.E) Monitoring Report – Historic Heritage

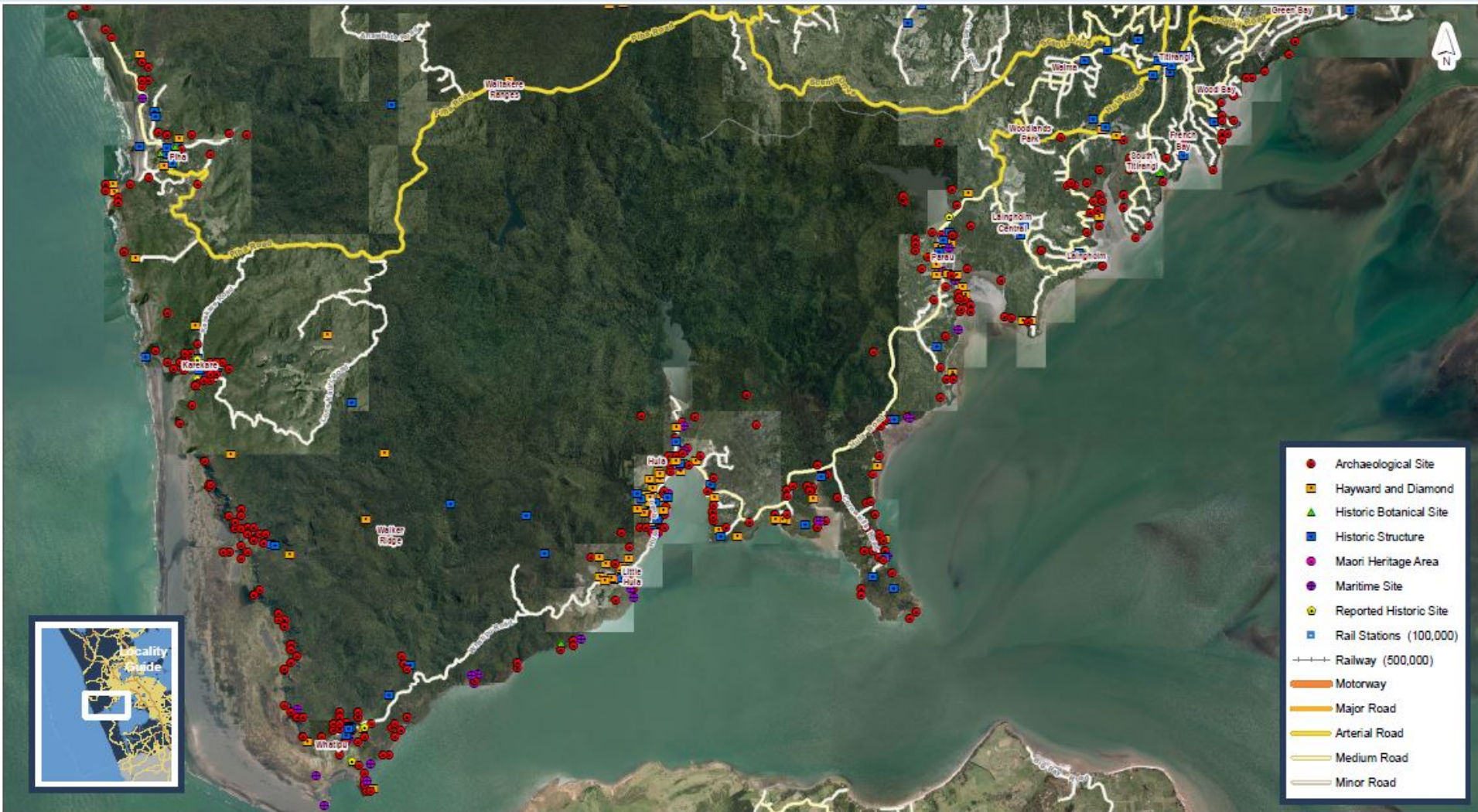
- Two heritage reports were produced (Gallagher 2013 & Plowman 2013)
- Both concluded that the current state of the heritage environment was unknown
- We had difficulty even identifying the number of sites in the WRHA
- WHY?
  - Limited survey and few return visits over last 40 years
  - Significant issues with data quality-
    - Site duplication
    - Poor quality and inconsistent recording
    - Inaccurate data relating to site location, extent and condition

# What Are We Doing About It?

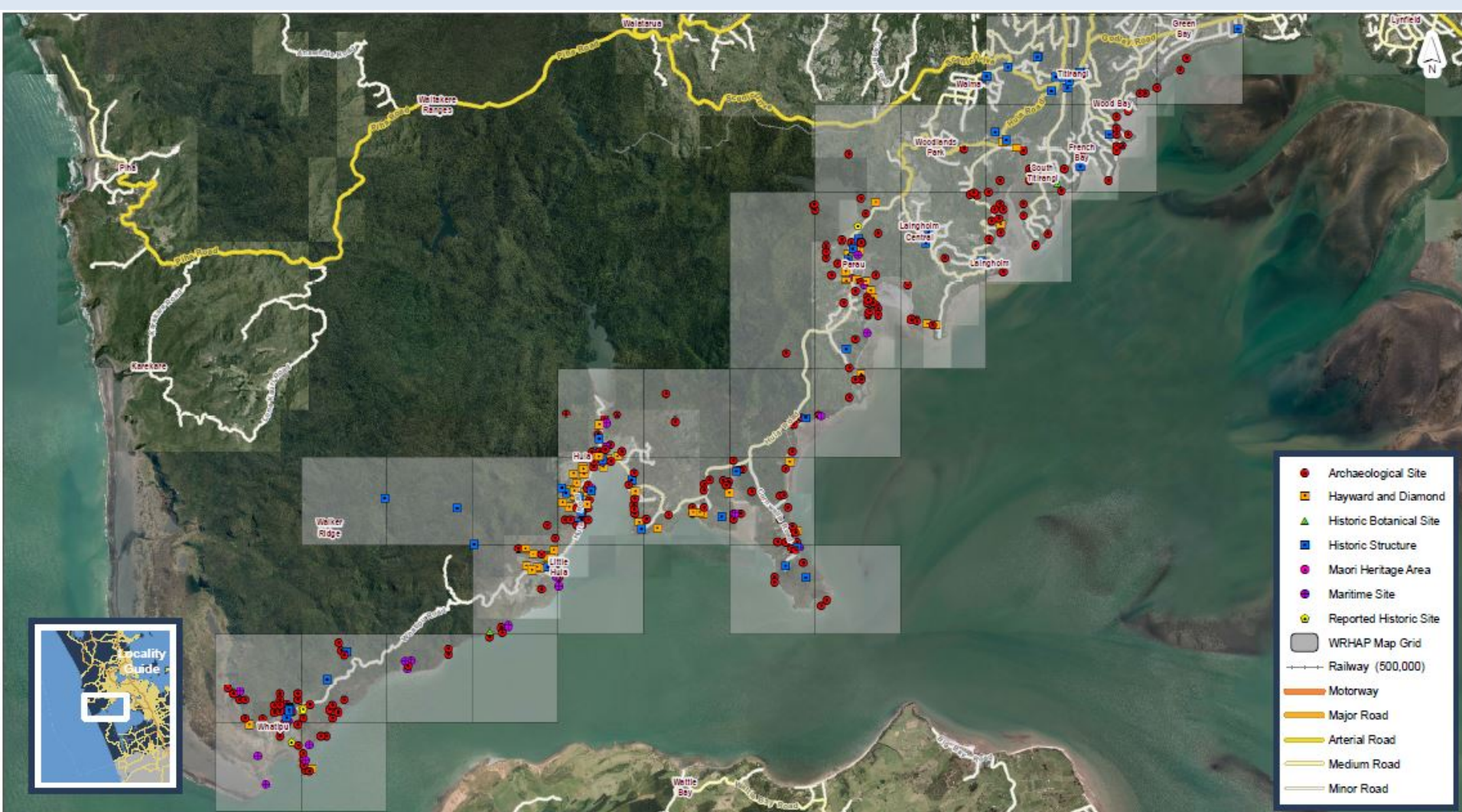
- Since the 2013 SOE report, the Waitakere Local Board has committed to addressing the lack of data on the SOE in relation to Historic Heritage in the WRHA
- In 2014 the Local Board funded a large data rationalisation exercise
  - Existing site data was organised and rationalised in a consistent manner and information gaps and research opportunities were identified
  - The result was 640 Maori and European heritage sites located in the coastal environment on public land were prioritised for survey data upgrade and monitoring.



# 2015-2016 Priority Survey Upgrade Sites

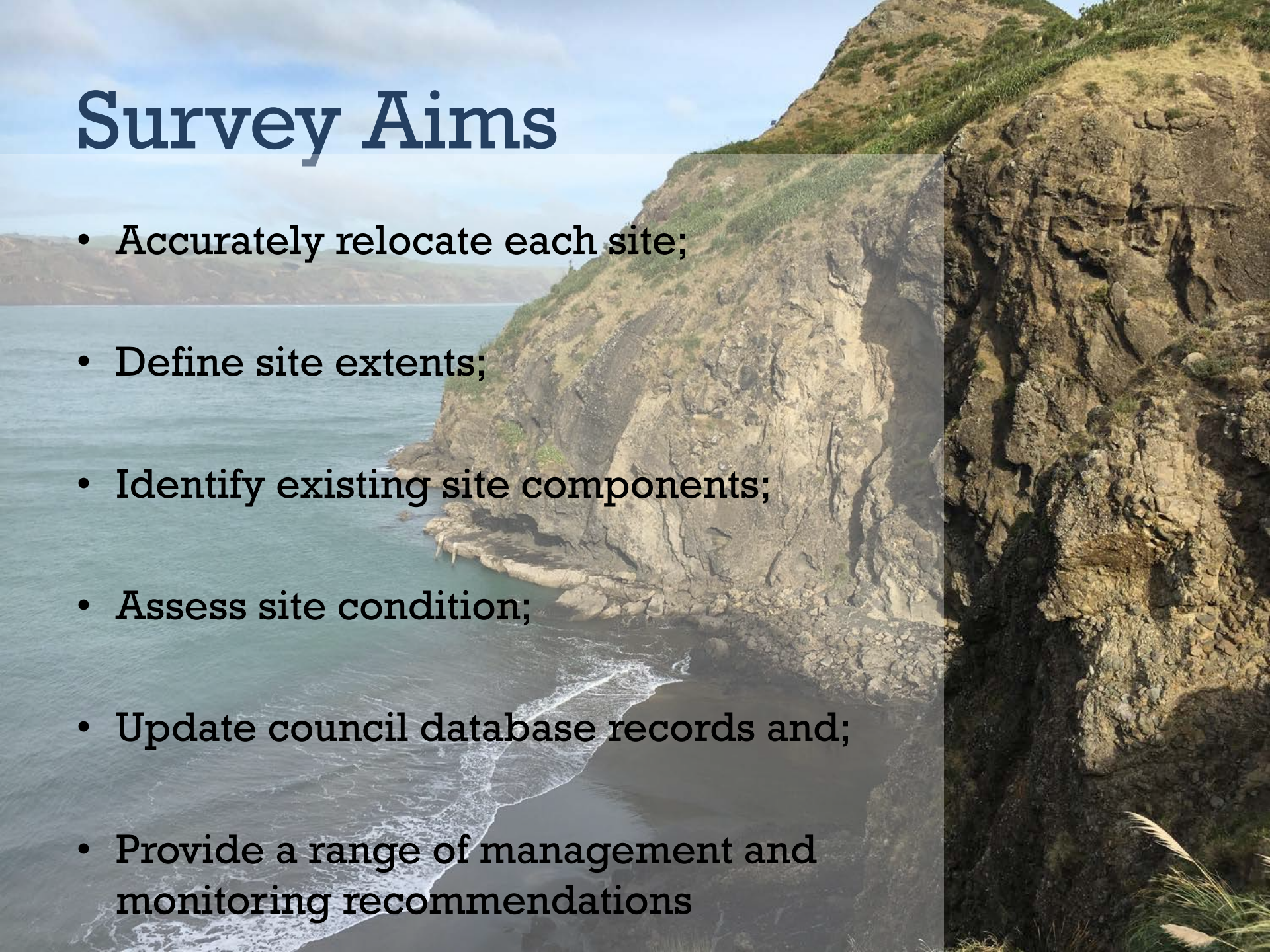


## 2015-2016 Priority Sites –Southern Coast



# Survey Aims

- Accurately relocate each site;
- Define site extents;
- Identify existing site components;
- Assess site condition;
- Update council database records and;
- Provide a range of management and monitoring recommendations



# 2015-2016 Survey Results to Date

- Surveyed 150 of the 290 priority archaeological sites between Green Bay and Little Huia
- Relocated 66 of 150 priority sites
- Updated locational and descriptive information
- Drawn site extents
- Built heritage upgrade survey – still on-going



# Fabulous New Midden Bryan Bay Huia



# Fabulous New Midden-Bryan Bay- Huia



## Little Huia – Midden



# Rediscovered Site- Boat shed/Midden – Cornwallis



## Rediscovered Site – Midden- Cornwallis



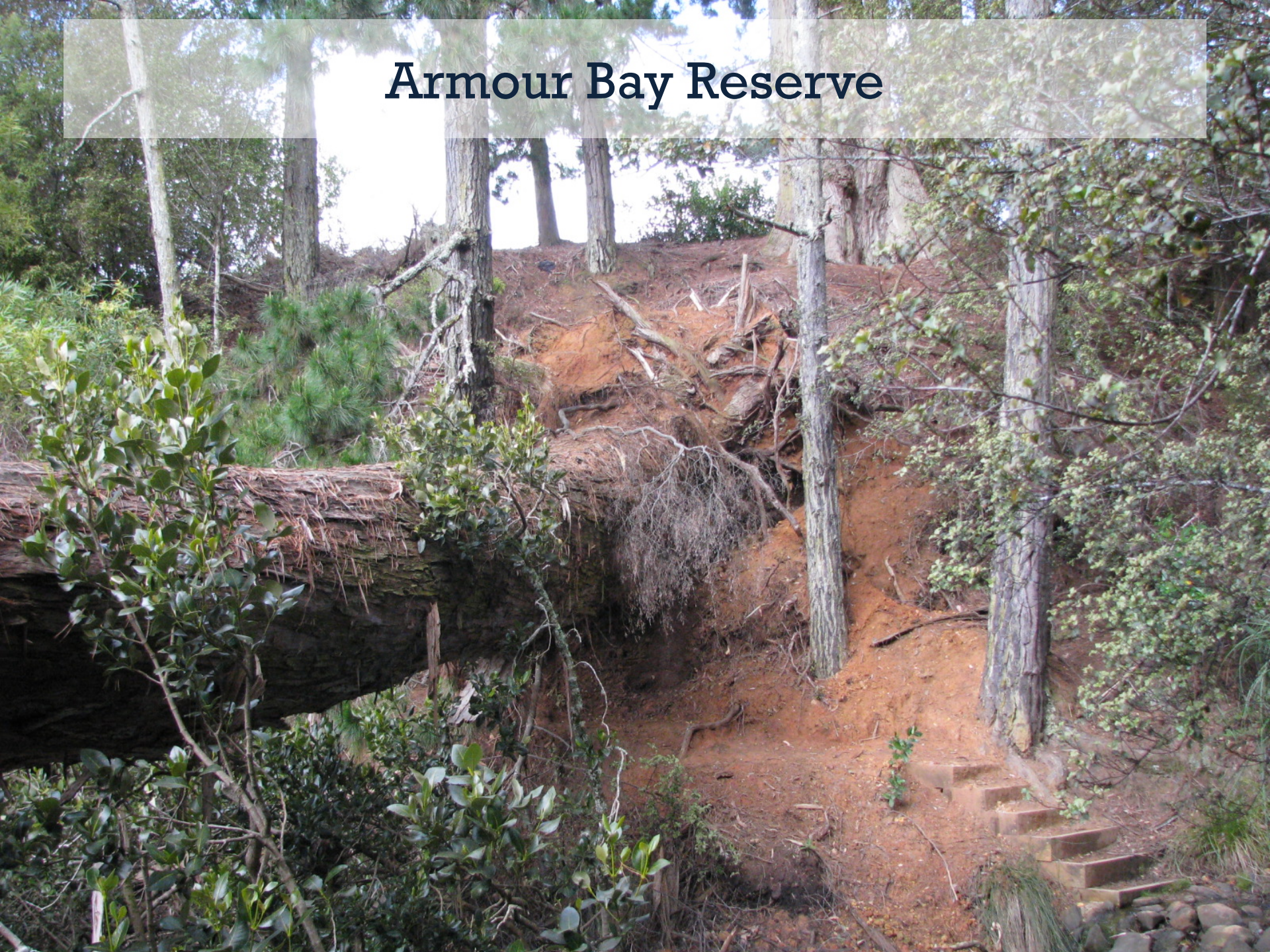
# Armour Bay Reserve



# Armour Bay Reserve



# Armour Bay Reserve



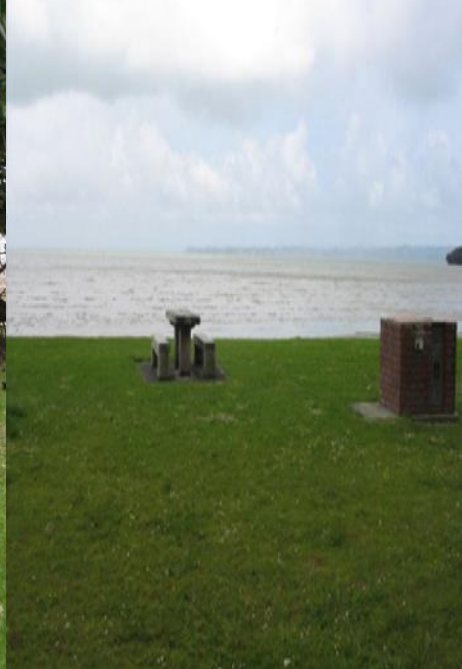
# Armour Bay Reserve Bay – Mowing Strip



# Armour Bay Reserve Bay



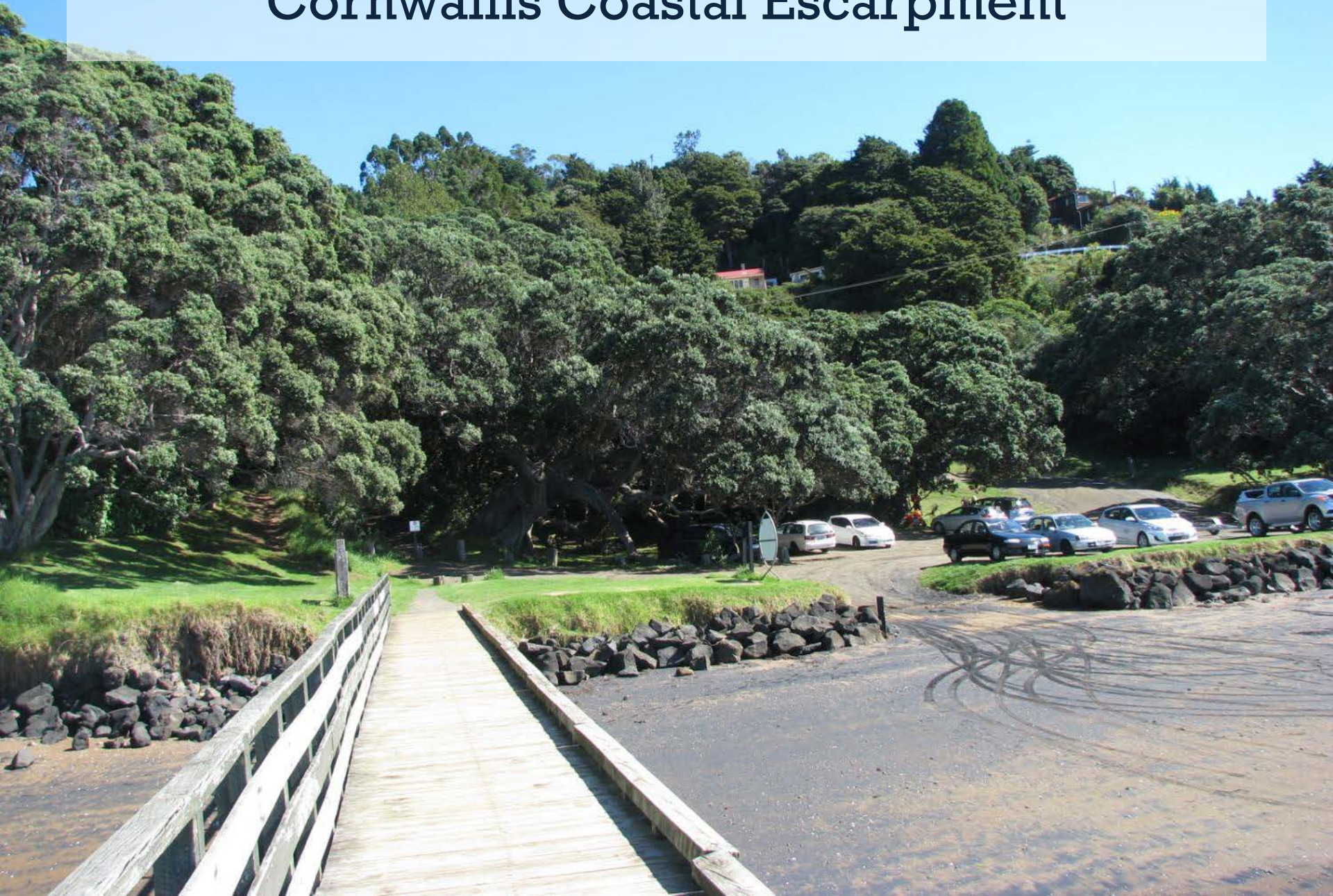
# Picnic Table Badness



# Amenity Overload -Green Bay



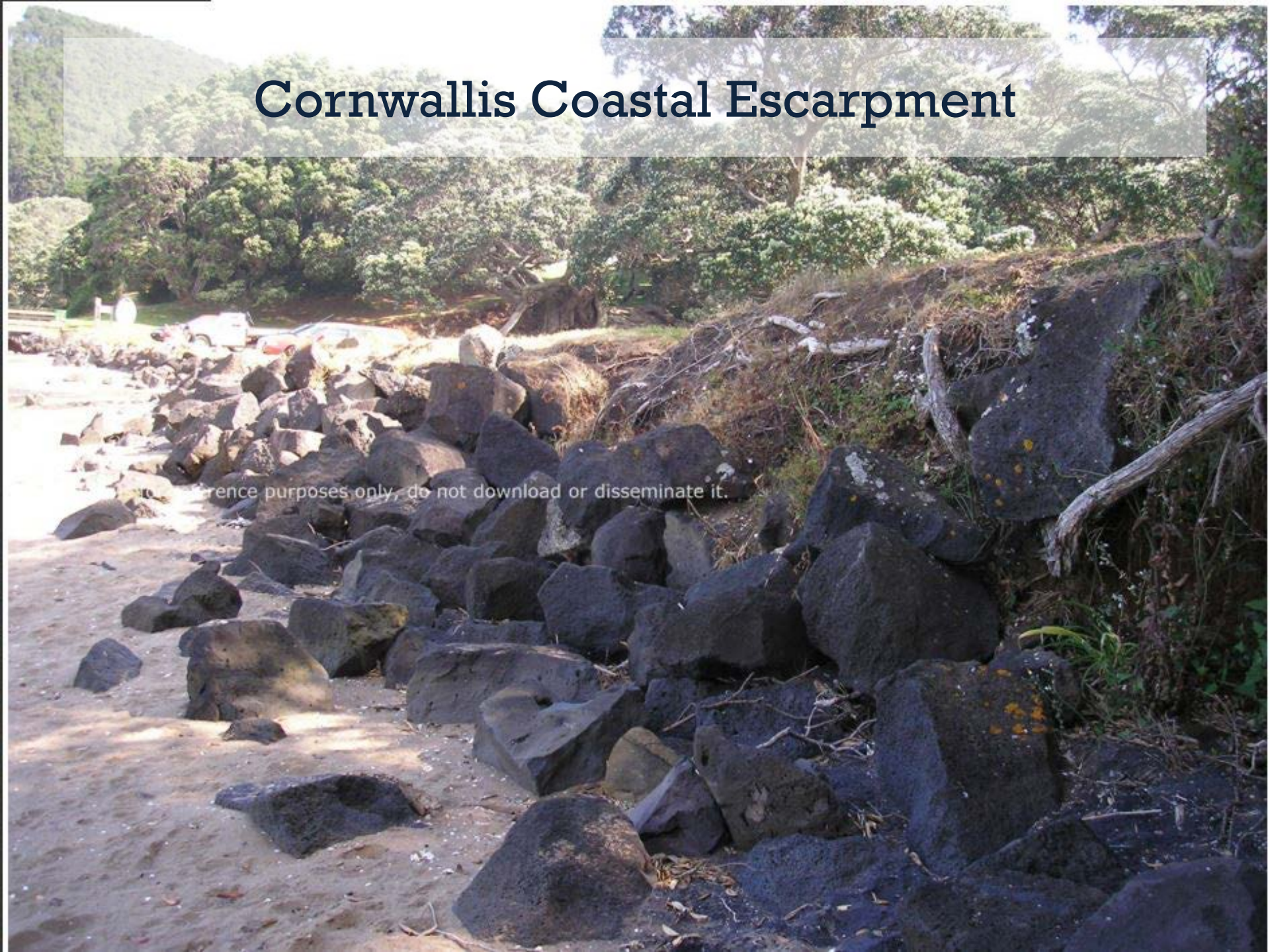
# Cornwallis Coastal Escarpment



# Cornwallis Coastal Escarpment



# Cornwallis Coastal Escarpment

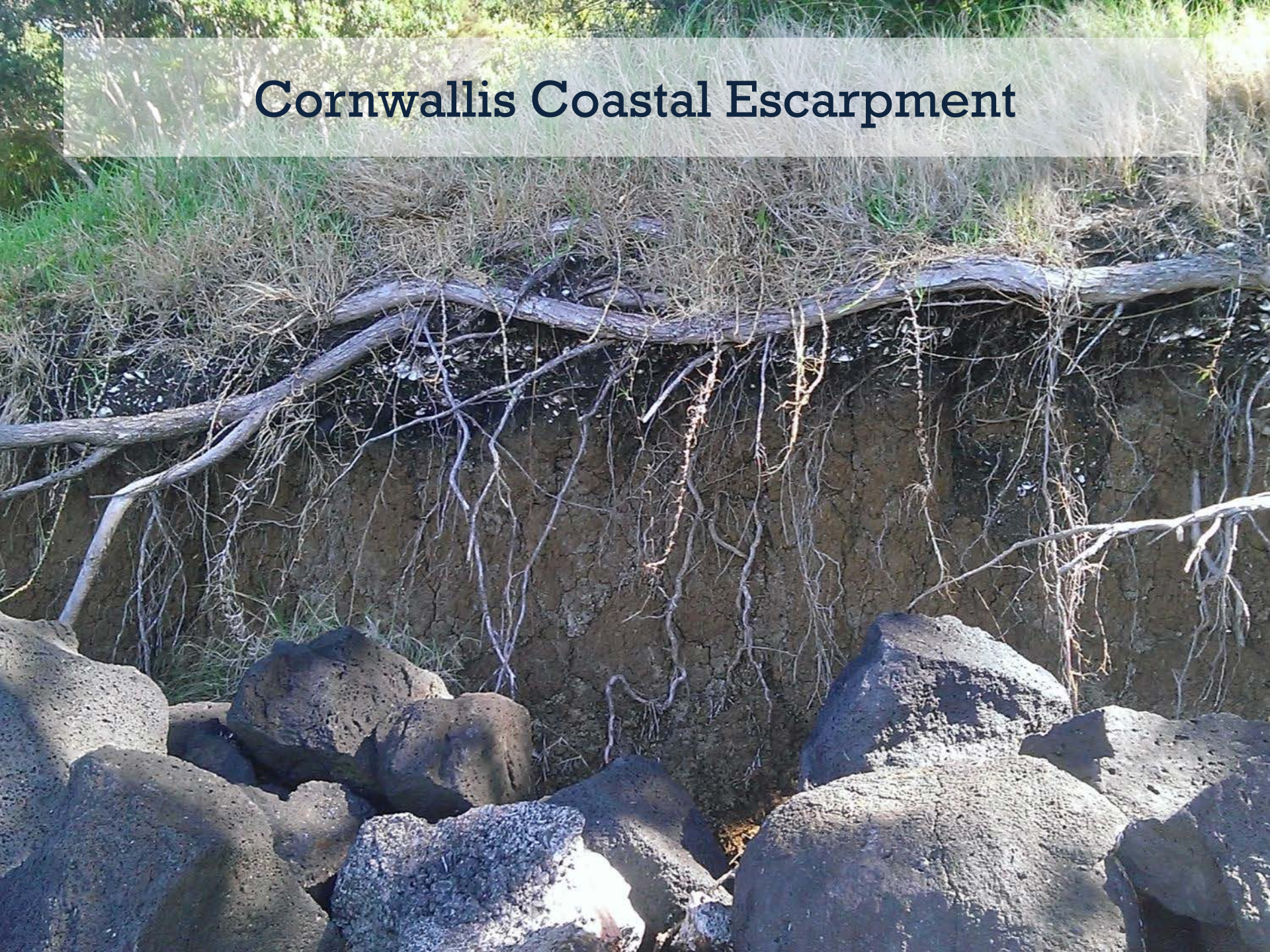


For reference purposes only, do not download or disseminate it.

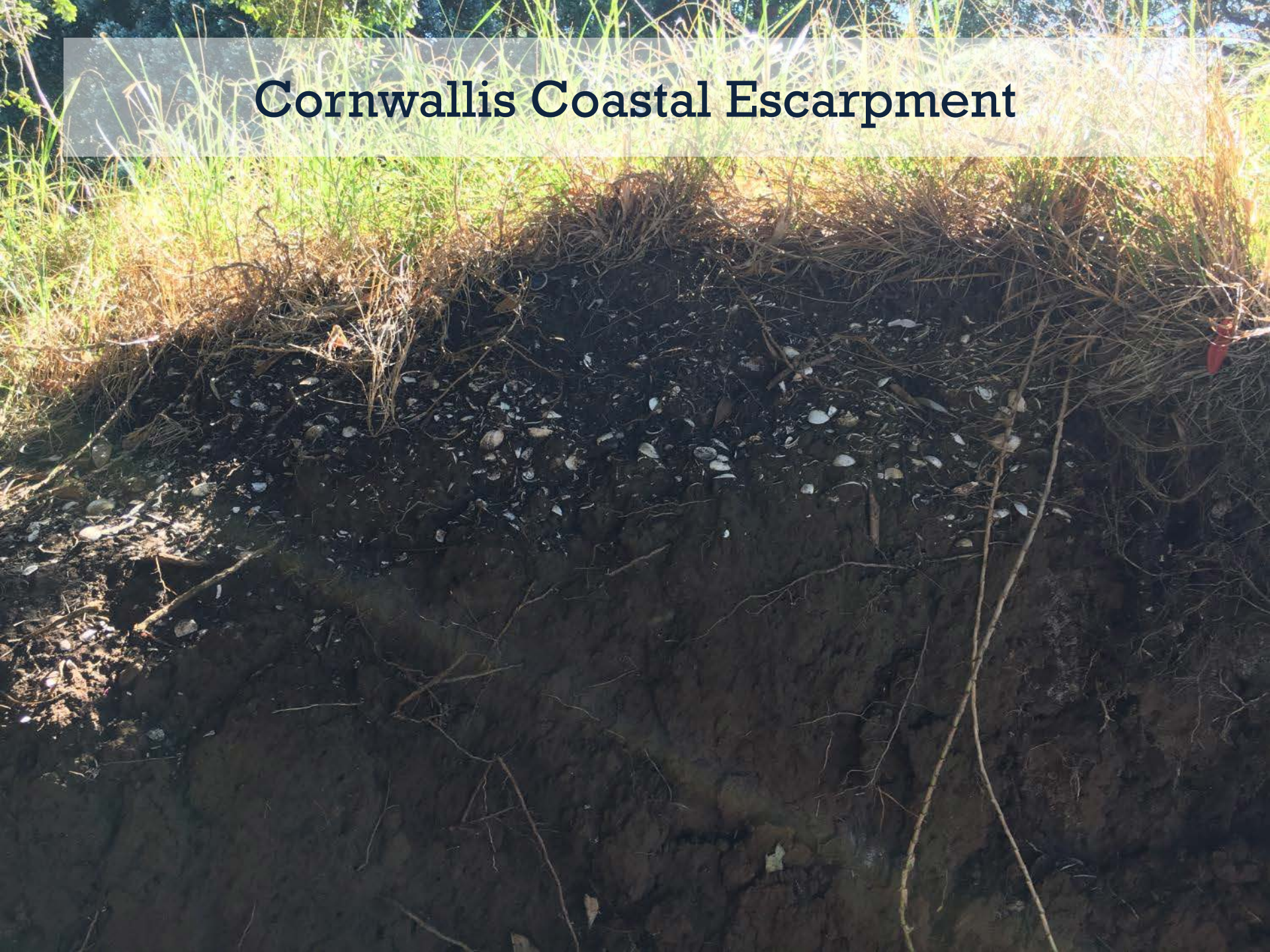
# Cornwallis Coastal Escarpment



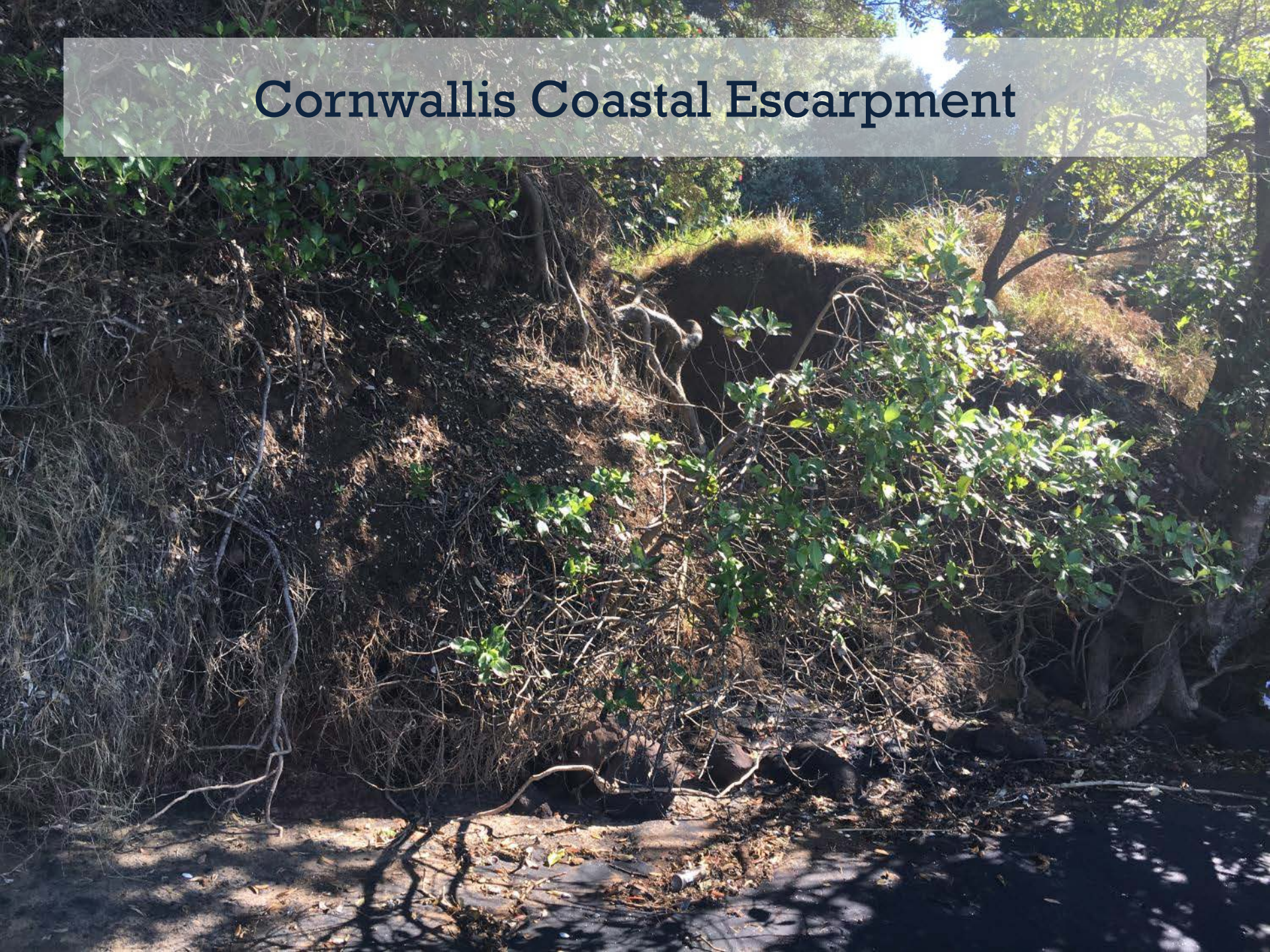
# Cornwallis Coastal Escarpment



# Cornwallis Coastal Escarpment



# Cornwallis Coastal Escarpment



# Cornwallis Coastal Escarpment



# Cornwallis Coastal Escarpment



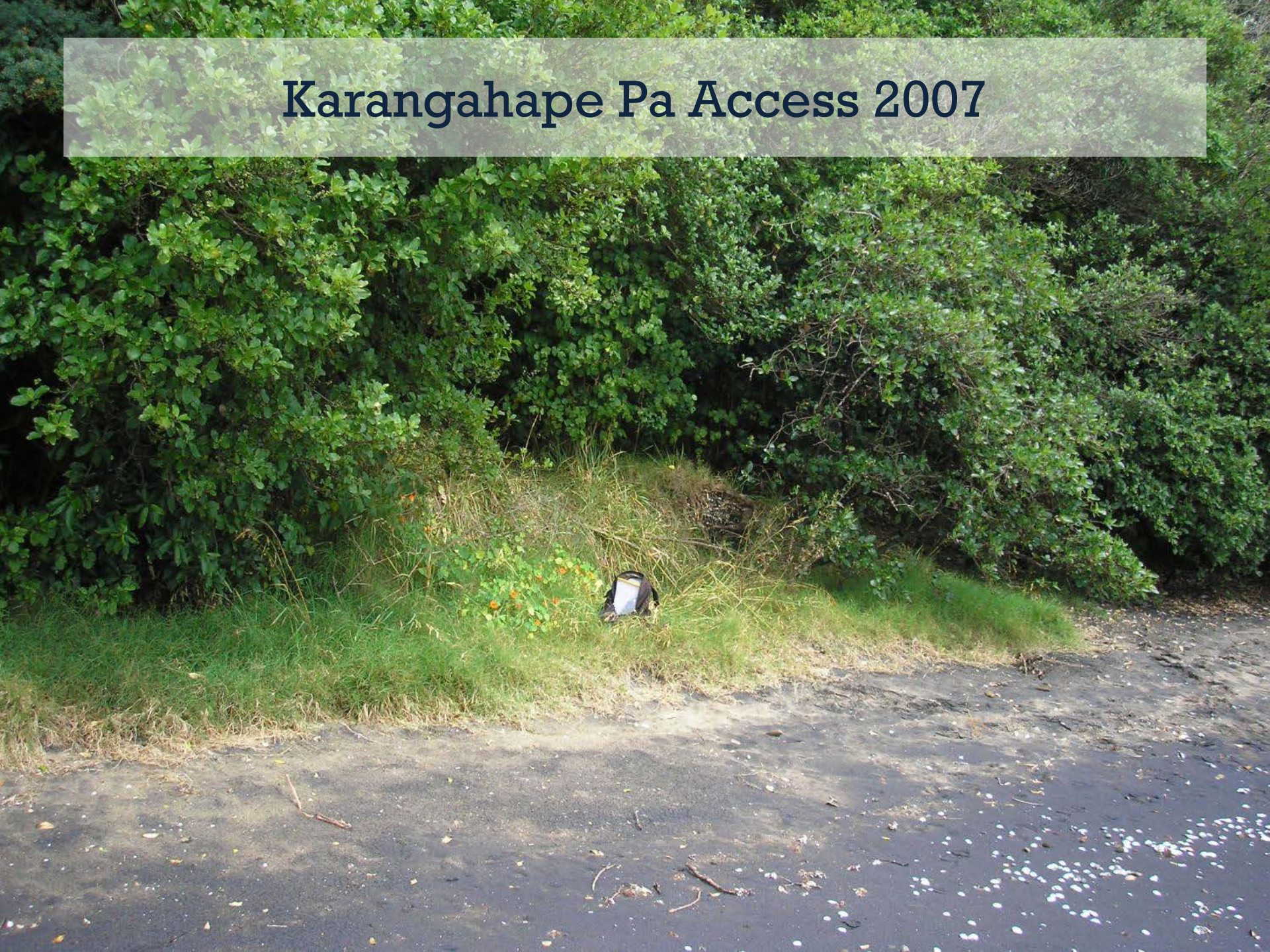
# Cornwallis Coastal Escarpment - Midden



# Cornwallis – Karangahape Pa



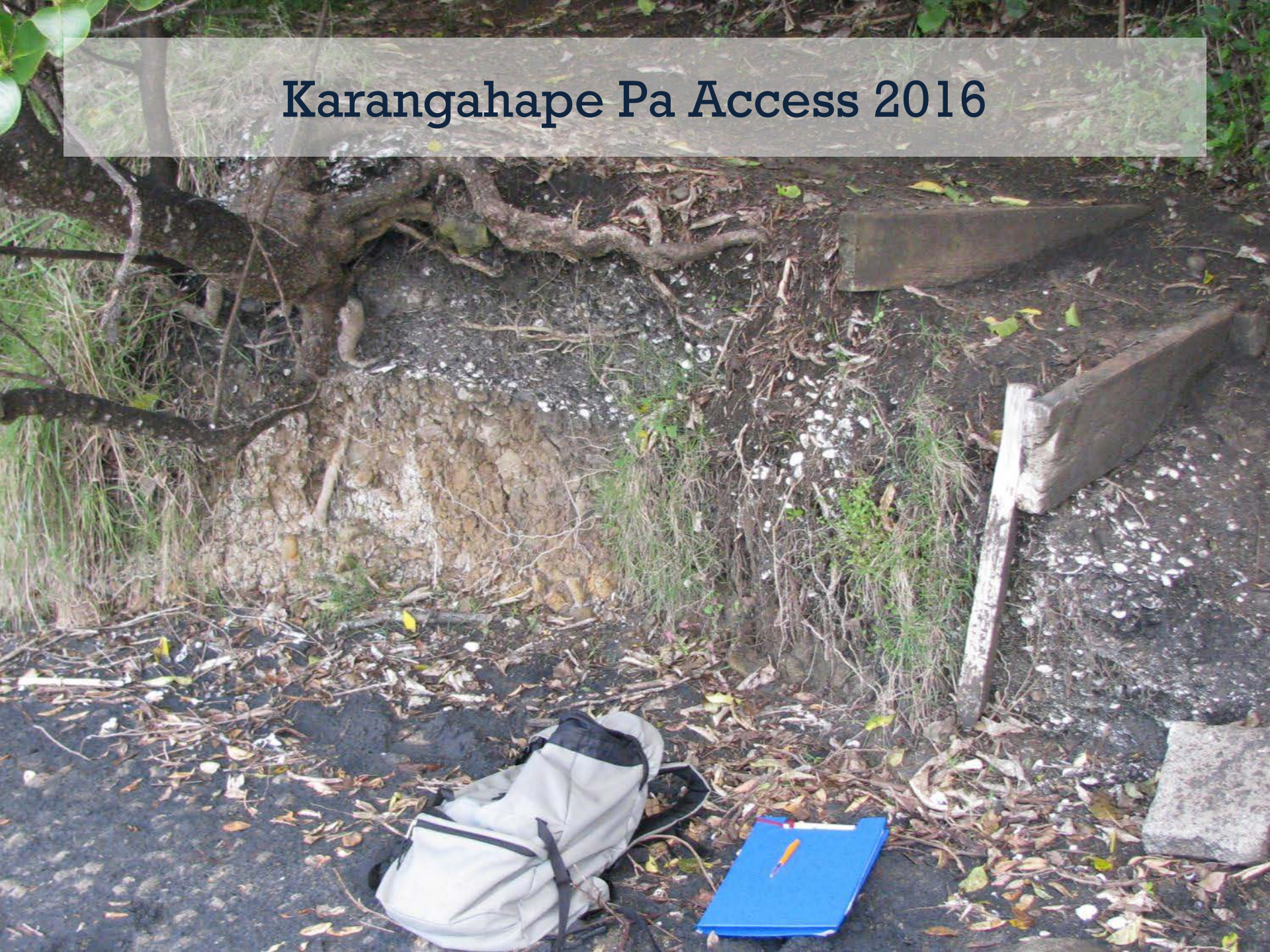
# Karangahape Pa Access 2007



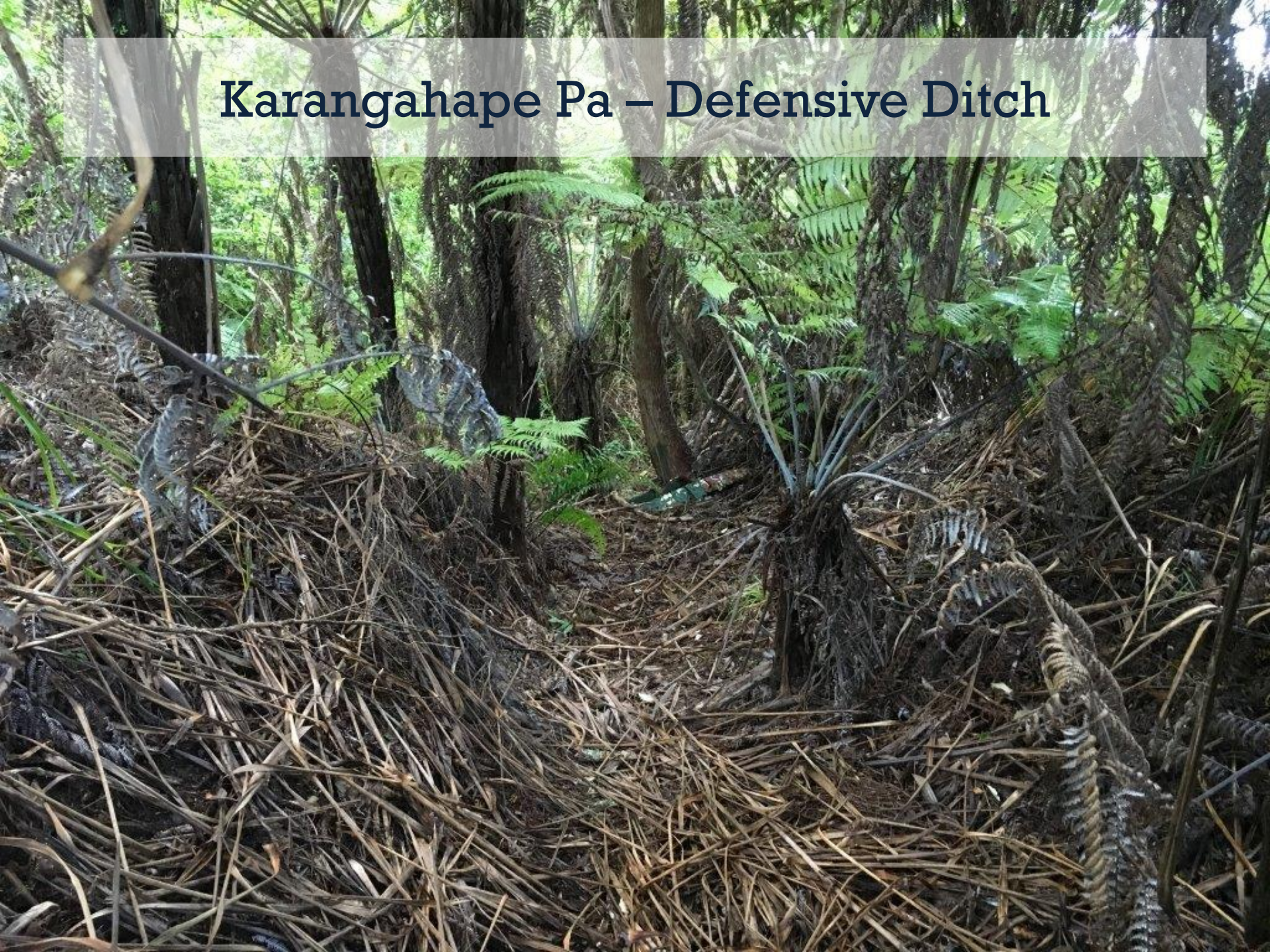
# Karangahape Pa Access 2016



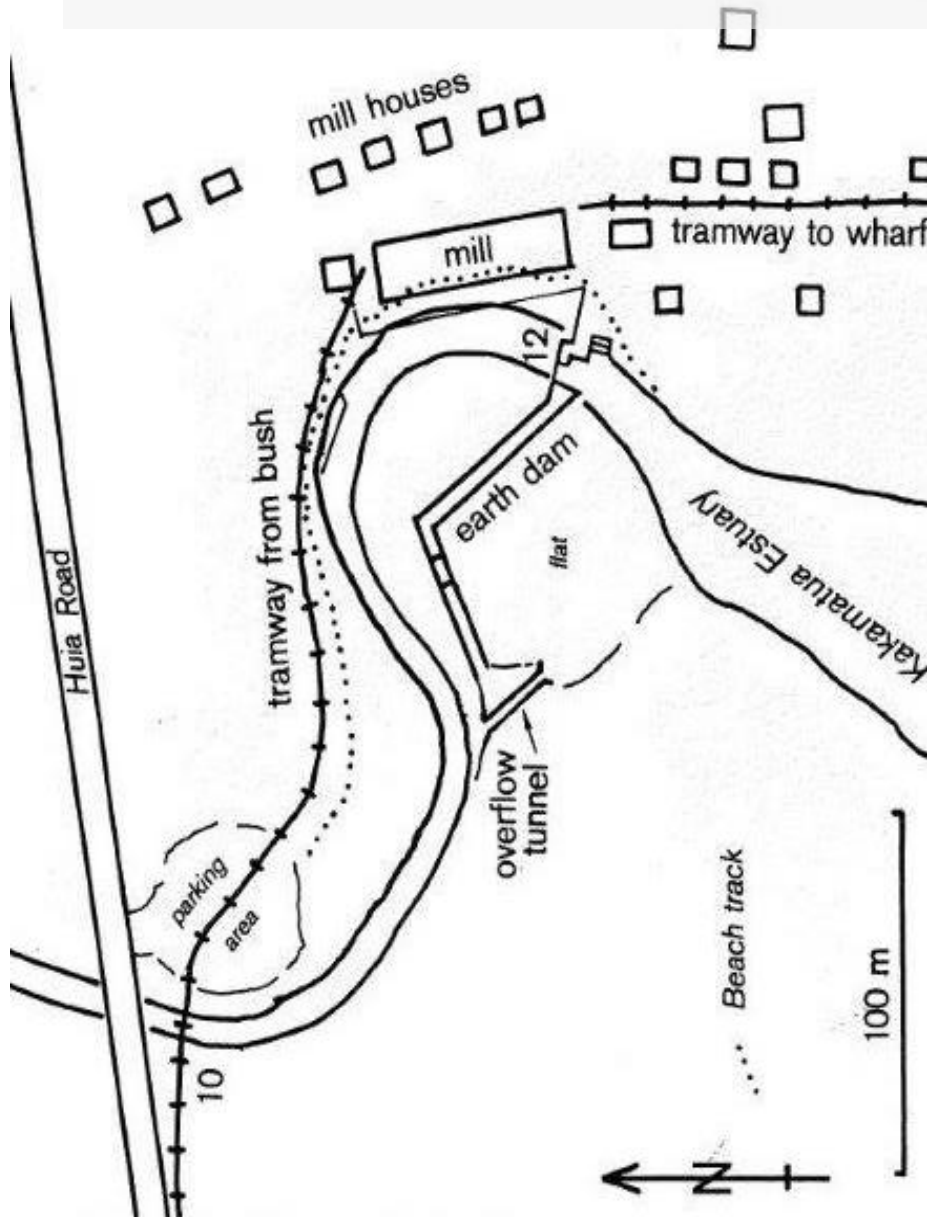
# Karangahape Pa Access 2016



## Karangahape Pa – Defensive Ditch



# Roe's Cornwallis Timber Mill



# Parks Management

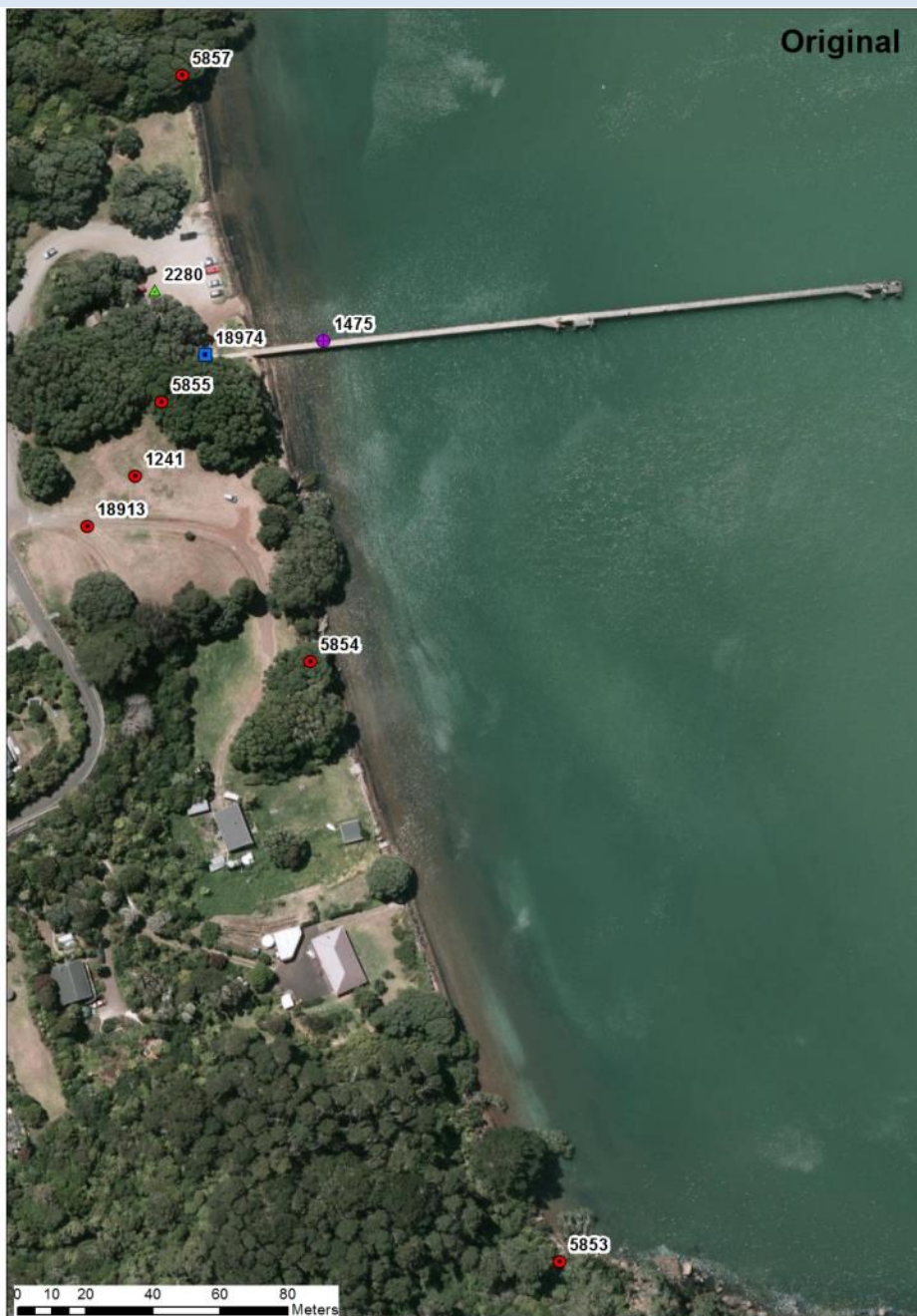
- Survey methodology has been designed to assist parks management
- Inaccuracies in site location and duplication are being resolved
- Single point site locations have been replaced with defined site extents



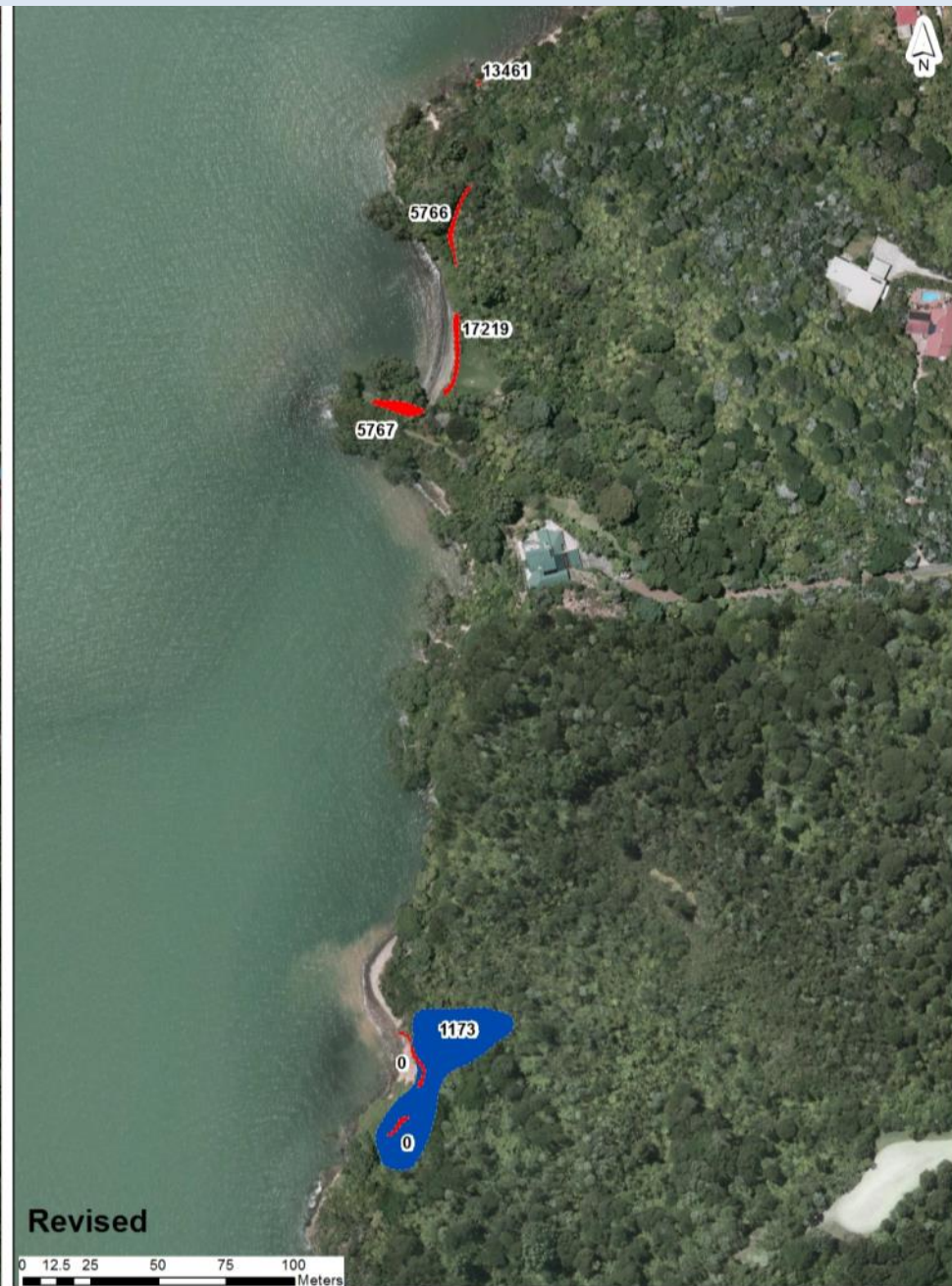
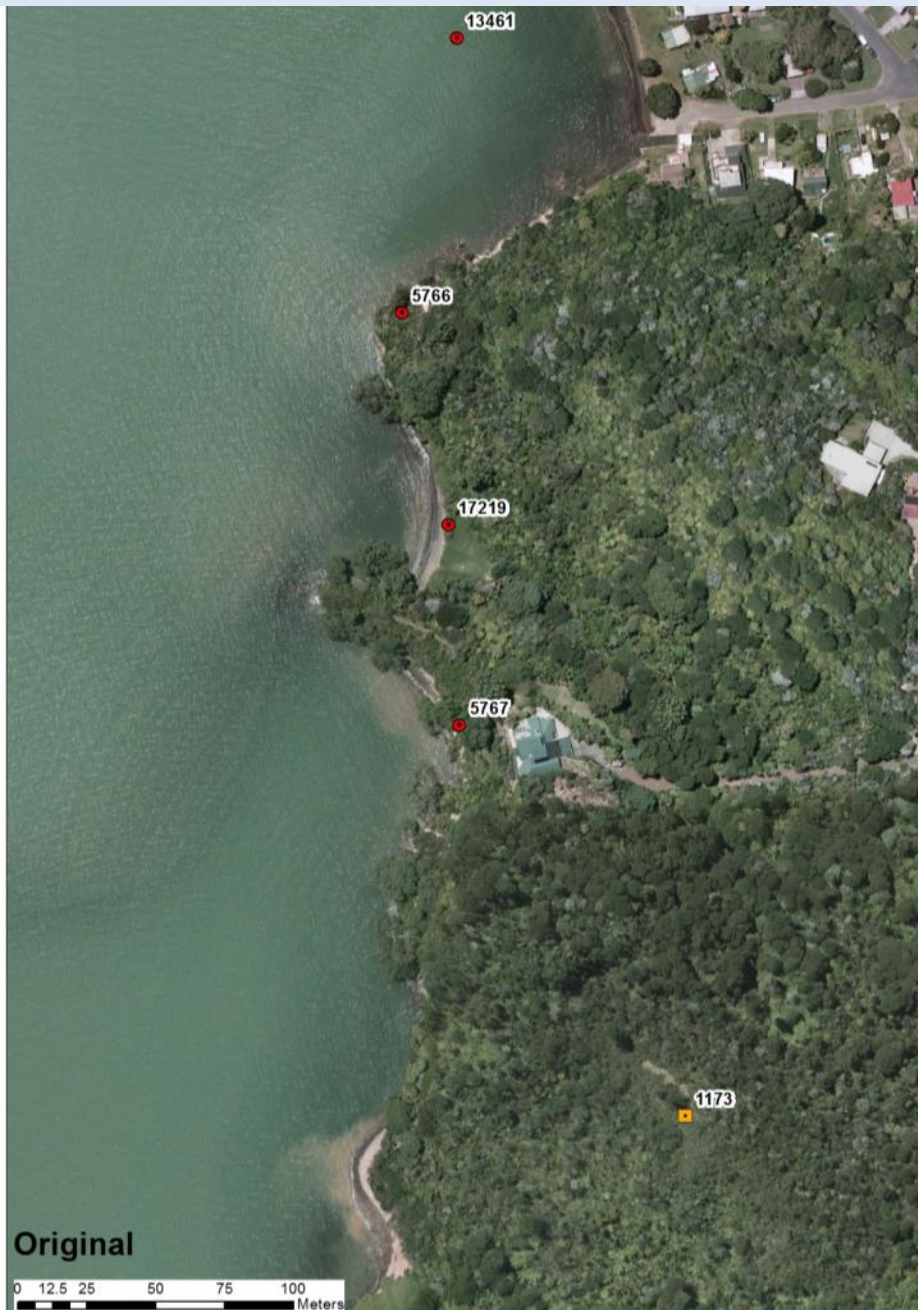
# 2015-2016 Revised Site Extents – Armour Bay



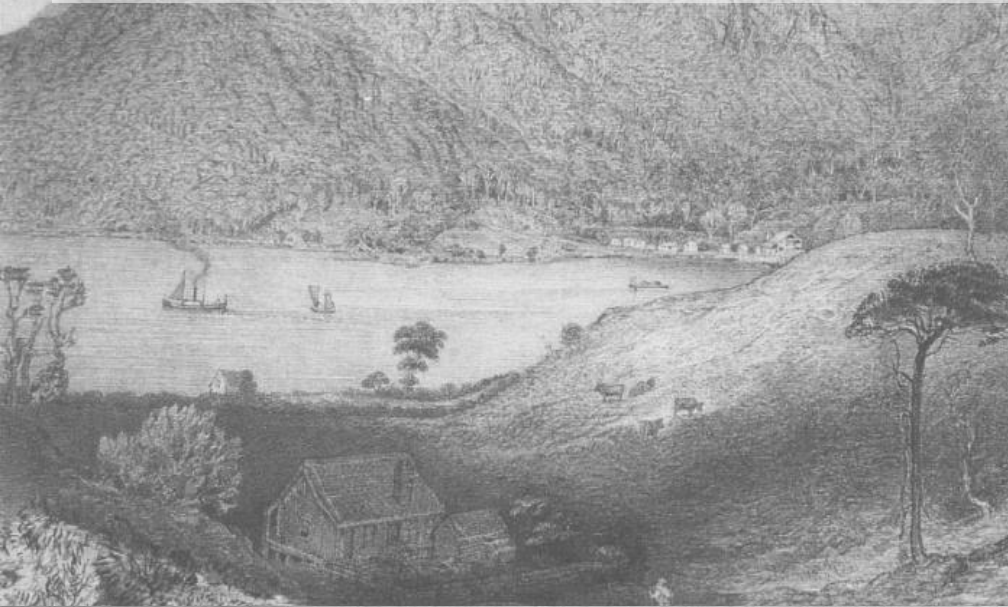
# 2015-2016 Revised Site Extents – Cornwallis



# 2015-2016 Revised Site Extents – Foster Bay



# Baches at Foster Bay Comparison Images



*"Con Bryans" On Huia Point below the lookout.*

# Gibbon's Huia Mill Holding Dam Comparison Images



*The Huia stream and Gibbons' dam and mill site. The clay bank on the right defines the site of the original dam which was as high as the lower part of the swingbridge.*

Harvey Collection



# Little Huia Wharf Comparison Images

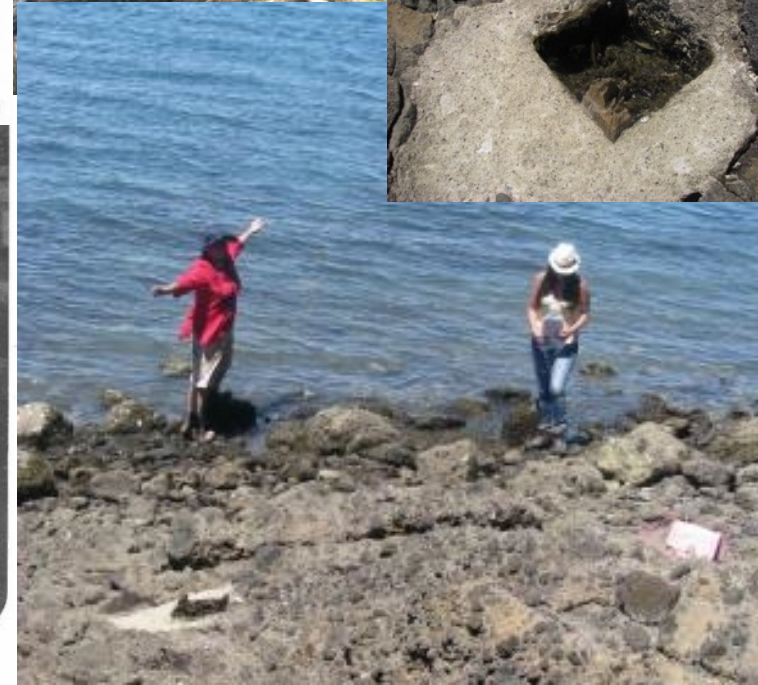


In the first decade of this century Huia was a popular destination for steamer excursions down the Manukau Harbour from Onehunga. This view taken in 1909 shows a boatload of excursionists at the Little Huia wharf.

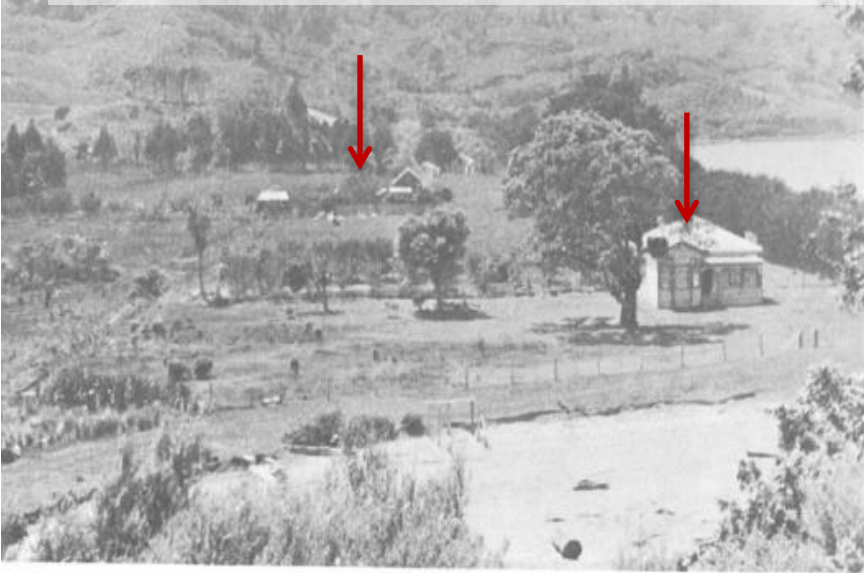
Page Eleven



*Little Huia Wharf built in 1907*



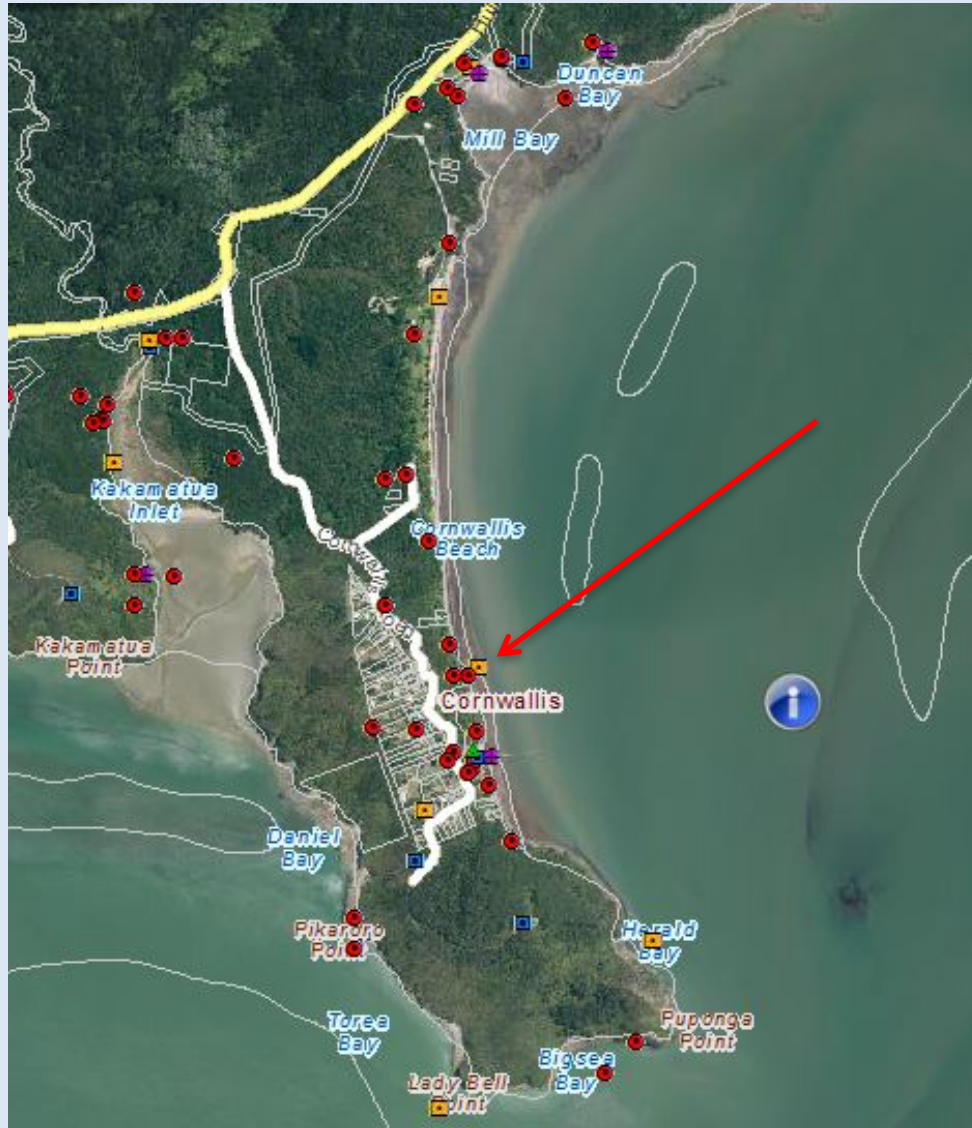
# Kilgour/Higham House(s) Huia – Comparison Images



"Big Hula Bridge 1912." Built around 1900. Note the road around the waterfront until 1912. The concrete bridge was built in 1935.

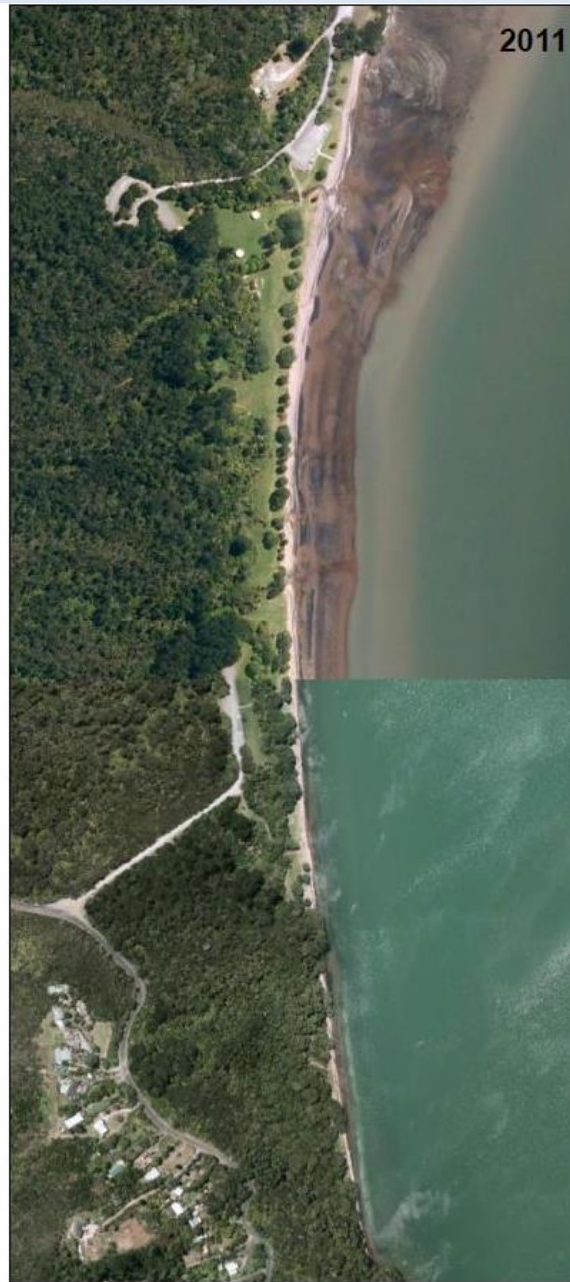


# Cornwallis Baches



“ numerous baches at Cornwallis Beach from the early 1900s onward. At least 70...Plants and debris everywhere. Destroyed 1960s”

# Cornwallis Baches Revised Site Extent



# What's Next -Survey Upgrade

- Complete 2016 field survey – Whatipu & Big Muddy Creek
- Finalise GIS site extents for the work completed
- All the digital paperwork and data upgrade – NZAA, CHI, GIS
- Talk to Parks -draft Management priorities for sites in Parks Reserves
- Incorporate Built Heritage Survey results – due in December 2016
- Survey the western coast (Whatipu to Bethells)- Hopefully..



# 2017 Research - Huia Timber Milling & Associated Sites

- Six milling operations between 1850-1910
- Confusion and duplication of records is at its worse.
- CHI has over 40 site record forms- recording individual mill features reported as part of the various Huia operations
- Considered to be the subject of a separate study
- Historic connectedness; extent and reuse of these mills requires that they are assessed as a group and by the right specialist.

